

Setup Manual for the PARTNER-CTR UIC-MIDI

Read this guide before connecting the "PARTNER-CTR UIC-MIDI" series to your computer.

This manual describes how to connect the PARTNER-CTR UIC-MIDI to the computer, install device drivers for each OS and set up the system.

Interfaces Described in This Manual

USB Interface

OSs Described in This Manual

Windows XP

Windows Vista

Windows 7

-Please note that the content and specifications of this product may be modified without prior notice.

-Although every care has been taken in the production of this product, Kyoto Microcomputer Co., Ltd. cannot be held responsible for any consequences of the use of this product.

Kyoto Microcomputer Co., Ltd.

Cautions

Precautions and notices against hazards are presented with the following symbols.



Indicates a general notice or warning that cannot be specifically identified.



Indicates that improper use may cause an electric shock.



Indicates that improper use may cause fumes or fire.

Follow the instructions in this manual for your safety to use the product.



Do not use the product if any smoke, odor, or noise is present.

If smoke, odor, or noise is present, immediately turn off the BT. POWER switch and disconnect the power plug from the outlet. Using the product in such conditions may cause a fire or an electric shock.



Do not disassemble, repair, or alter the product.

Except changing batteries, do not disassemble, repair, or alter the product. Doing so may cause not only a malfunction, but also an electric shock, burn, or personal injury.



Keep water or foreign matter away from product.

Do not let any form of liquid (coffee, etc.) or foreign matter (e.g., pins or paperclips) enter the product. Doing so may cause an electric shock or a fire.



Do not touch the product and power plug with a wet hand.

Do not touch the product and power plug while your hands are wet. Doing so may cause an electric shock.



Use the provided AC Adapter and power cord only.

Use the provided AC Adapter and power cord. If not, a fire or an electric shock may happen.



Do not place the product in a dusty and/or humid place.

Do not place the product in a dusty and/or humid place. Doing so may cause a malfunction or a fire.



Do not stretch the cord harness.

Do not pull the power cord forcibly. Doing so may cause an electric shock or a fire.



Do not put heavy objects on the product, or apply pressure to the product.

Do not put heavy objects on the product, or apply pressure to the product. Doing so may cause a malfunction or a fire.



Do not drop the product or apply vibration or shock.

Do not drop the product from higher place, or apply vibration or shock. Doing so may cause a malfunction.



Avoid rapid change of temperature and humidity.

Avoid rapid change of temperature and humidity. If not, malfunction may happen.

Regulatory Statement

--- U.S.A & Canada ---

- CAUTION: Changes or modifications not expressly approved by the party responsible for compliance could void the user's authority to operate the equipment.
- NOTE: This equipment has been tested and found to comply with the limits for a Class A digital device, pursuant to part 15 of the FCC Rules. These limits are designed to provide reasonable protection against harmful interference when the equipment is operated in a commercial environment. This equipment generates, uses, and can radiate radio frequency energy and, if not installed and used in accordance with the instruction manual, may cause harmful interference to radio communications. Operation of this equipment in a residential area is likely to cause harmful interference in which case the user will be required to correct the interference at his own expense.

This Class A digital apparatus complies with Canadian ICES-003.

Cet appareil numérique de la classe A est conforme à la norme NMB-003 du Canada.

--- CE ---

- We declare, under our solo responsibility, that the products identified in this declaration are in conformity with the requirements of Council Directive:

2004/108/EC on the harmonization of the laws of Member States relating to EMC Directive.

2006/95/EC on the harmonization of the laws of the Member States relating to Low Voltage Directive

2002/96/EC on the approximation of the laws of the Member States relating to Waste Electrical and Electronic Equipment Directive.

2002/95/EC on the approximation of the laws of the Member States relating to the restriction of the use of certain hazardous substances in electrical and electronic equipment

Safety : EN60950-1:2006/A11:2009

EMC : EN 55022:2006+A1:2007

EN 61000-3-2:2006

EN 61000-3-3:1995+A1:2001+A2:2005

EN 55024:1998+A1:2001+A2:2003

Manufacturer

2-44 Ooenakayama-cho, Nishikyo-ku, Kyoto-city, Kyoto, Japan

Phone: +81 75-335-1050 Fax: +81 75-335-1051

Kyoto Microcomputer Co., Ltd. (KMC)

- About destruction in EU within the region.:

The use of the WEEE symbol indicates that this product may not be treated as household waste. By ensuring this product is disposed of correctly, you will help protect the environment. For more detailed information about the recycling of this product, please contact your local authority, your household waste disposal service provider or the shop where you purchased the product.



--- Australia ---



ACN 060 566 083

Table of Contents

1. Introduction	6
1.1. Accessories	6
1.2. Attach the Ferrite cores.....	7
1.3. Part Names for PARTNER CTR UIC-MIDI	8
1.4. CTR SUB CARD Installation.....	9
1.5. Setup Procedure	10
2. Setting up PARTNER-CTR UIC-MIDI.....	11
2.1. Connecting Connectors	11
3. Installing / Uninstalling the Software	13
3.1. How to Install the HIO-Daemon	13
3.2. How to Uninstall the HIO-Daemon.....	14
4. Starting PARTNER-CTR UIC-MIDI.....	15
4.1. Writing application to PARTNER-CTR UIC-MIDI	15
4.2. Connecting a MIDI device to the PARTNER-CTR UIC-MIDI	16
4.3. Connecting PARTNER-CTR UIC-MIDI to a PC.....	16
4.4. Installing the PARTNER-CTR UIC-MIDI USB driver	17
4.5. Starting the HIO-Daemon	19
5. Appendix	21
5.1. Manual Installation of the USB Driver.....	21
6. Specification	25
6.1. Product Specification	25

1. Introduction

1.1. Accessories

The following accessories are supplied with the PARTNER-CTR UIC-MIDI. First, make sure you have all of these accessories.

1. PARTNER-CTR UIC-MIDI Setup Manual	1
2. PARTNER-CTR UIC-MIDI Main Unit	1
3. USB Cable	1
4. Power Adapter	1
5. Ferrite core(L)	2
6. Ferrite core(S)	2

Note: The PARTNER-CTR UIC-MIDI software is **NOT** bundled with the hardware. You will have to download the installer from the **DEVELOPER TOOL DOWNLOAD SITE**. The connecting cable for MIDI device is NOT bundled.

1.2. Attach the Ferrite cores

Before using, Attach the bundled ferrite cores to the USB cable and the AC adapter cable. This allows reduce the noise generated from the main box.

Ferrite core (L): PN: ZCAT2032-0930 (manufacture: TDK) x 2 pcs.

Attach ferrite cores to the both ends of USB cable

Ferrite core (S): PN: RFC-4 (manufacture: Kitagawa Industries) x 2 pcs.

Attach a ferrite core to the bundled AC adapter cable. If you use another AC adapter for CTR Test Unit, Attach it to the AC adapter cable as well.

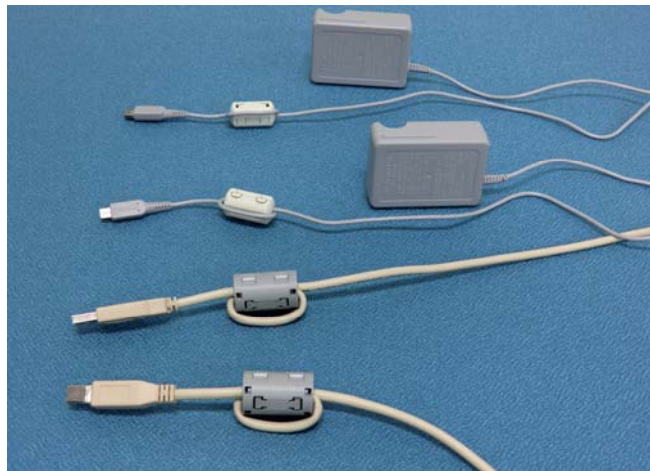


Figure 1 Fixing the ferrite cores

Attach the two kinds of ferrite cores shown as above. (Bundled AC adapter is one in the package)

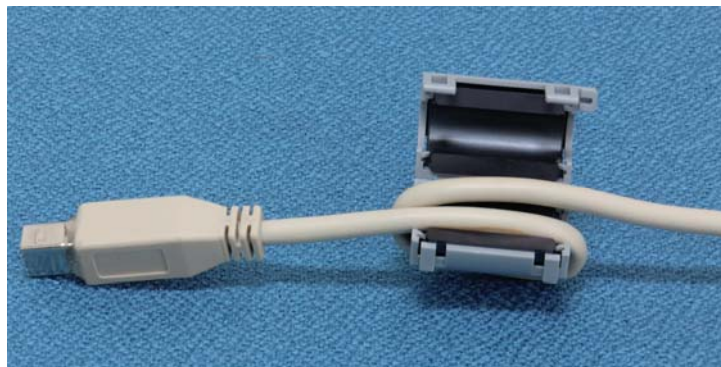


Figure 2 Procedure of fixing ferrite core

Steps to fix the ferrite cores:

1. Unlock the stopper of the ferrite core and open it.
2. As shown in the Figure 2, turn the cable twice about 3cm away from the connector.
3. Place the cable in the ferrite core and close it until it clicks.

1.3. Part Names for PARTNER CTR UIC-MIDI

PARTNER-CTR UIC-MIDI contains the following connectors..

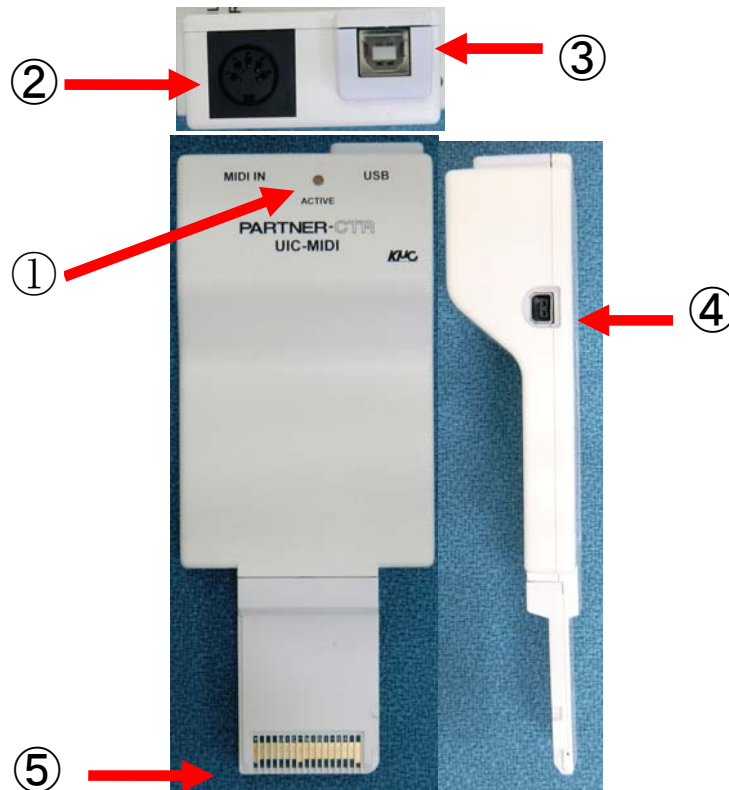


Figure 3 UIC-MIDI

① ACTIVE LED

Lights up while the unit is powered on. Blinks in green during accessing the unit. When it lights up or blinks in red, it may be broken the hardware. Please contact your sales distributor.

② MIDI-IN

Connect a MIDI-Out device to MIDI-IN connector. Support MIDI-IN only.

③ USB

Connect with a USB cable to a PC.

④ Power Connector

Connect the power adapter supplied with the product.

⑤ Card Connector

Connect an CTR Test Unit and PARTNER-CTR Debugger/ Capture/CaptureDebugger.

1.4. CTR SUB CARD Installation

Attention

If you use MIDI function with CTR-SDK version 1.0 or former (including ver. 1.0), do not insert 1Mbit/4Mbit SUB CARD into UIC-MIDI main unit. The function that allows you to use MIDI with 1Mbit/4Mbit SUB CARD inserted into UIC-MIDI will be supported in the future CTR-SDK version. It will be noticed as “changelog supported” in the supported version.

To install the CTR Sub card (1M/4M FLASH) to PARTNER-CTR UIC-MIDI, loosen and take the four screws out on back side of PARTNER-CTR UIC-MIDI, then insert the sub card to the connector and tighten up the screws.



Figure 4 Backside of PARTNER-CTR UIC-MIDI

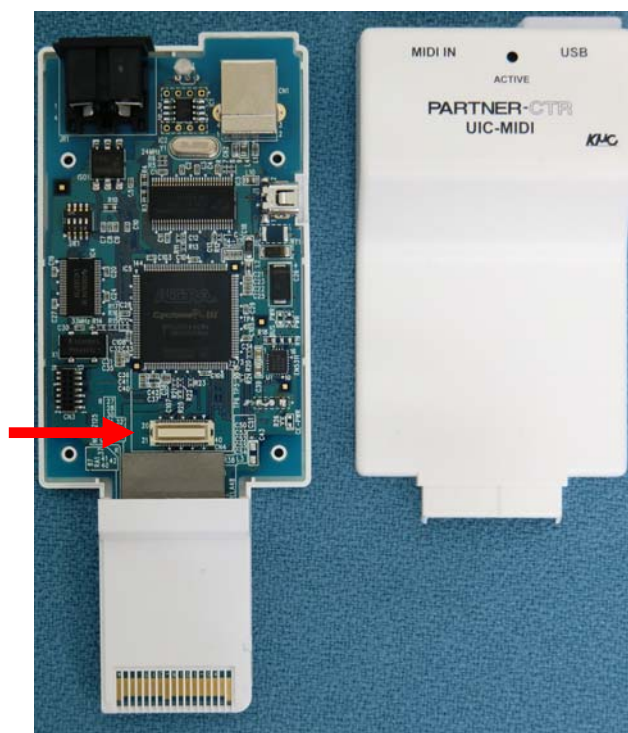


Figure 5 Connector for CTR sub card

1.5. Setup Procedure

The following text describes the overview of the PARTNER-CTR UIC-MIDI setup procedure for first-time users. Follow the procedure below to set it up.

1. Setting up PARTNER-CTR UIC-MIDI

Connect the PARTNER-CTR UIC-MIDI main unit. In detail, please refer to “2 [Setting up PARTNER-CTR UIC-MIDI](#)” (page11).

2. Setting up Software

To use PARTNER-CTR UIC-MIDI, the dedicated software should be installed. In detail, please refer to “3 [Installing / Uninstalling the Software](#)” (page13).

2. Setting up PARTNER-CTR UIC-MIDI

2.1. Connecting Connectors

It has to have power supply via power adapter or USB when you use PARTNER-CTR UIC-MIDI. There is no power supply from card edge (Card slot).

If the PARTNER-CTR UIC-MIDI behaves in an erratic way while the power is supplied via USB, the power supply capability from PC and USB hub may be low. In this case, please use the power adapter.

Connecting Power Adapter

Plugging the bundled power adapter into an outlet and connect the other end of power adapter to the power connector on the side of PARTNER-UIC MIDI main unit. The power supply can be selected via USB bus or power adapter.



Figure 6 Connecting power adapter

Connecting USB cable

To use HostIO feature, connect one end of the supplied USB cable to the USB connector and the other end to the USB port on your PC. In this case, normally the power is supplied via USB, it is not necessary to connect to the power adapter.



Figure 7 Connecting USB

Connecting a MIDI Cable

When using PARTNER-CTR UIC-MIDI with MIDI device connected, connect one end of a MIDI cable (not bundled) to the MIDI-IN connector and connect the other end to MIDI output device. In this case, connect power adapter to supply power.



Figure 8 Connecting MIDI cable

3. Installing / Uninstalling the Software

You will have to install the HIO-Daemon to connect the PARTNER-CTR UIC-MIDI to your PC.

If you have already used PARTNER-CTR Debugger or PARTNER-CTR Capture Debugger, the HIO-Daemon is bundled in the installer of debugger software. Skip this step, if HIO-Daemon is already installed.

3.1. How to Install the HIO-Daemon

Start up Windows XP/Vista/7 and install the PARTNER-CTR UIC-MIDI.

Downloading the Setup Program

The PARTNER-CTR UIC-MIDI software is **NOT** bundled with the hardware. You will have to download the setup program from the **DEVELOPER TOOL DOWNLOAD SITE**.

Starting the Setup Program

By running the setup program “HIOD_XXX.EXE” (XXX shows version and date etc.) that you downloaded in the previous step, PARTNER-CTR UIC-MIDI setup is performed. (Refer to “Figure 9 Screen displayed during installation”.) Perform installation following the instructions given by the setup program.

Once the installation process is complete, a shortcut icon for the PARTNER-CTR UIC-MIDI is created in the Start menu.

Note Be sure to store the PARTNER-CTR UIC-MIDI installer you used somewhere safe after the installation has completed.

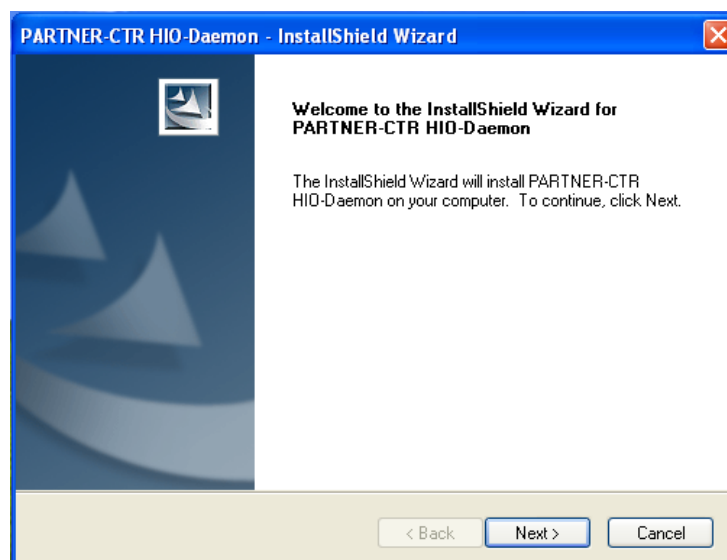


Figure 9 Screen displayed during installation

If the user performing the setup procedure does not have administrator rights, a message shown in "Figure 10 Message displayed during setup" may appear and the USB drivers may not be installed. To install the USB driver in such a case, refer to "5.1 [Manual Installation of the USB Driver](#)" (page21)



Figure 10 Message displayed during setup

3.2. How to Uninstall the HIO-Daemon

Double-click the "Add or Remove Programs" icon in the Control Panel and select "PARTNER-CTR HIO-Daemon" from the list, then click "Remove".

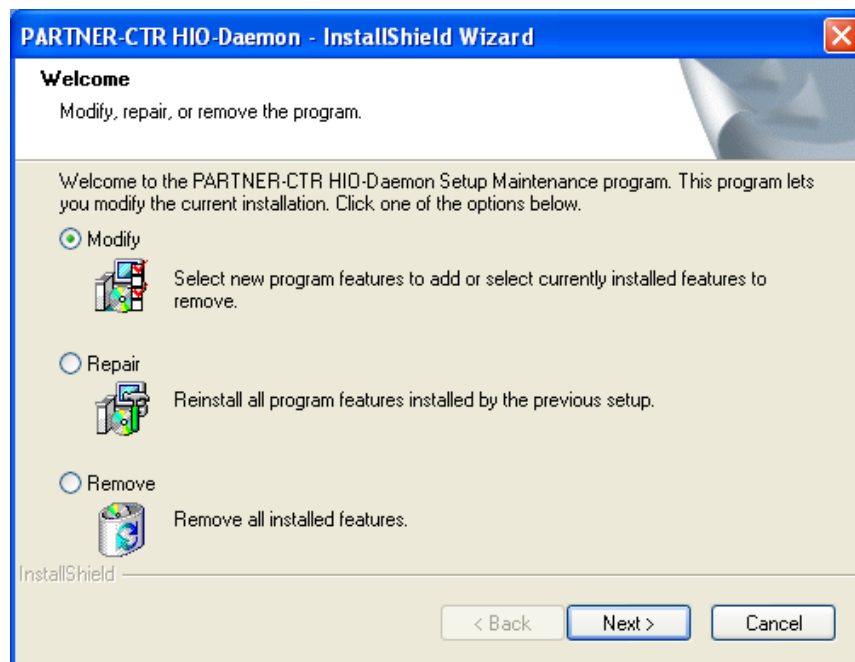


Figure 11 Screen displayed during uninstallation

4. Starting PARTNER-CTR UIC-MIDI

4.1. Writing application to PARTNER-CTR UIC-MIDI

This product functions as a “CTR FLASH CARD 16Gbit”. To write an application running for CTR Test Unit and PARTNER-CTR Debugger/Capture/CaptureDebugger to PARTNER-CTR UIC-MIDI, use PARTNER-CTR Debugger/CaptureDebugger or PARTNER-CTR Writer as same as CTR FLASH CARD.

The power supply is necessary when writing Flash. Connect power adapter or USB bus power to supply the power. (Using power adapter is recommended)



Figure 12 Writing by PARTNER-CTR Debugger



Figure 13 Writing by PARTNER-CTR Writer

4.2. Connecting a MIDI device to the PARTNER-CTR UIC-MIDI

To perform MIDI-IN function, connect one end of a MIDI cable (not bundled) to PARTNER-CTR UIC-MIDI and connect the other end to the MIDI device, then run the application for CTR. Normally, supply the power via power adapter.



Figure 14 Example for connecting MIDI-IN

4.3. Connecting PARTNER-CTR UIC-MIDI to a PC

To perform HostIO function, connect one end of the bundled USB cable to PARTNER-CTR UIC-MIDI and connect the other end to a PC, then run the application for CTR. Normally supply the power via USB. If the PARTNER-CTR UIC-MIDI behaves in an erratic way, the power supply capability of USB hub or PC may be low. In this case, please use the power adapter.



Figure 15 Example for the connection with HostIO function

When PARTNER-CTR UIC-MIDI is connected USB port of the PC for the first time or different USB port for the first time, the USB driver installation process will begin.

4.4. Installing the PARTNER-CTR UIC-MIDI USB driver

The PARTNER-CTR UIC-MIDI USB driver is automatically installed when the debugger setup procedure is performed using an administrator account. If the setup procedure is performed using a non-administrator account, refer to “5.1 [Manual Installation of the USB Driver](#)” (page21).

[Installation under Windows Vista, Windows 7]

The USB driver is automatically installed.

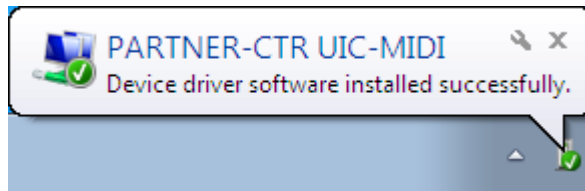


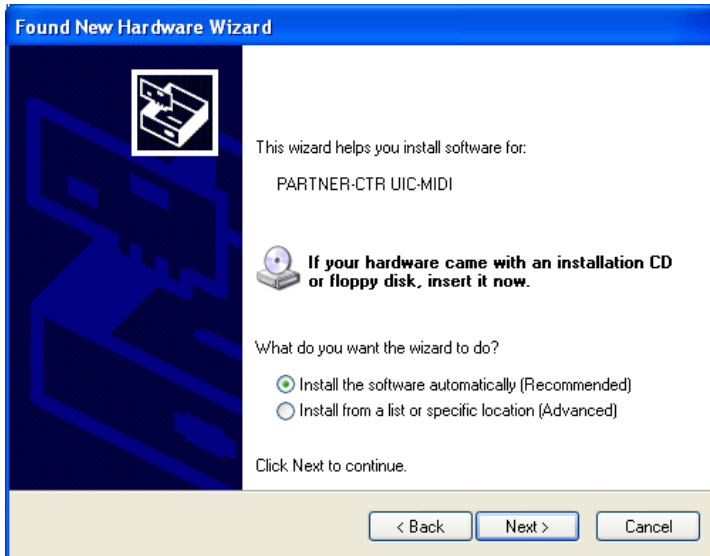
Figure 16 Installing the USB driver

[Installation under Windows XP]

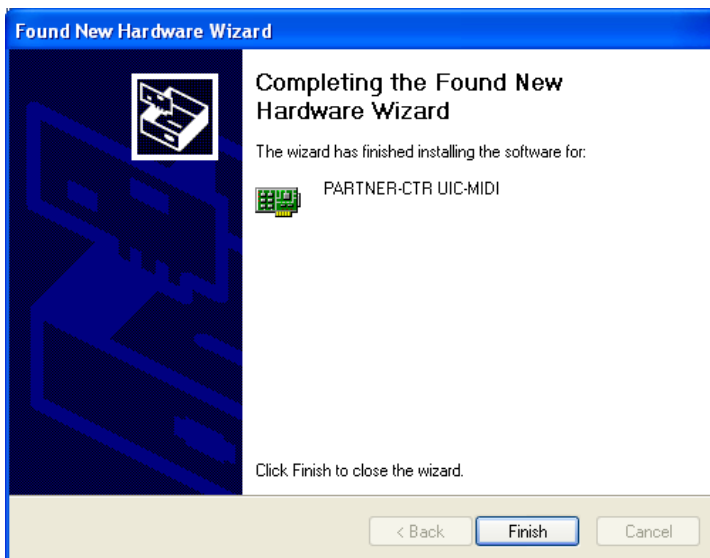
Follow the procedure below to install the USB driver under Windows XP.



Select [No, not this time] and click [Next] to continue.



Select [Install the software automatically] and click [Next] to continue.



The USB driver installation is complete

4.5. Starting the HIO-Daemon

If you use Windows XP, start the HIO-Daemon from the installer. If you use Windows Vista/ 7, select “HIO-Daemon” from the start menu to launch the software.

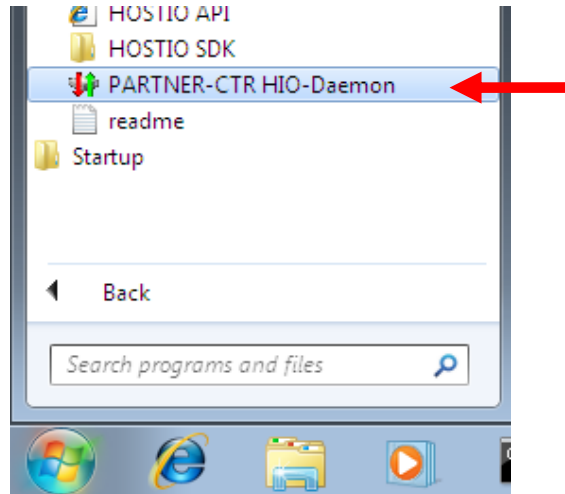


Figure 17 Starting up HIO-Daemon from the start menu

It is possible to setup as “Auto Start” on HIO-Daemon when log in by right-click on HIO-Daemon icon, then select “Config...”

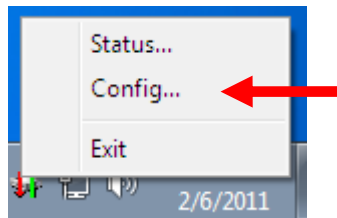


Figure 18 Config setting

Change the setting when dialog box is displayed.

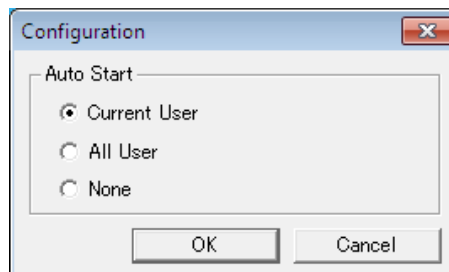


Figure 19 Auto Start setting

It may fail to set the auto start depends on the account authority under the Windows Vista/ 7 environment. In this case, start the HIO-Daemon with Administrator privileges and change the settings, then restart the HIO-Daemon.

Display when connected

When PARTNER-CTR UIC-MIDI is connected correctly, the balloon message shown below will be displayed.

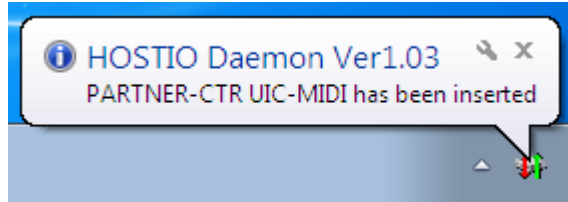


Figure 20 Message displayed when PARTNER-CTR UIC-MIDI is connected

Display when removed

When PARTNER-CTR UIC-MIDI is removed, the balloon message shown below will be displayed.

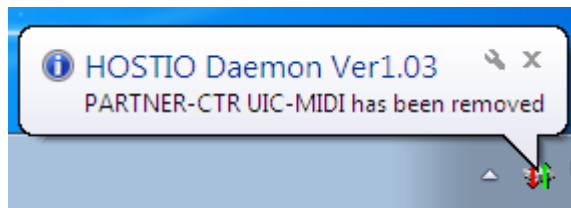


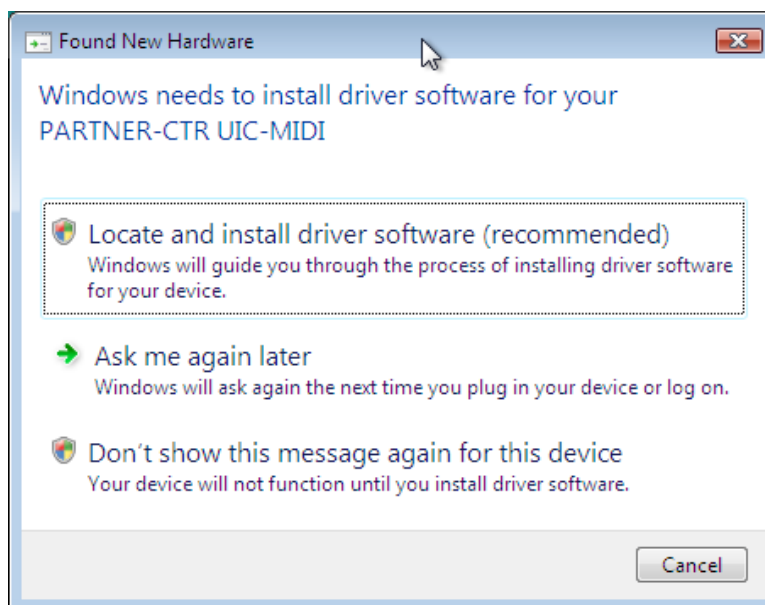
Figure 21 Message displayed when PARTNER-CTR Debugger (J)UIC-MIDI is removed

5. Appendix

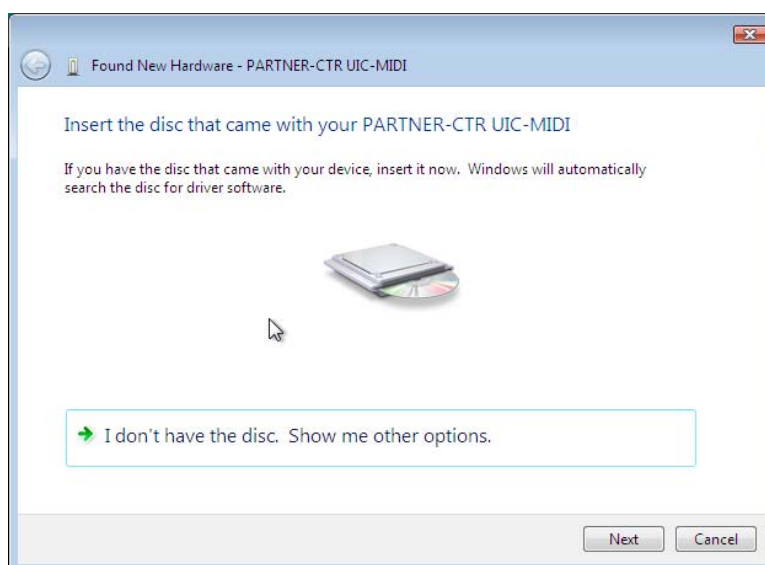
5.1. Manual Installation of the USB Driver

If the USB driver was not automatically installed, follow the procedure below to manually install the USB driver for the PARTNER-CTR UIC-MIDI. To start installer, connect the PARTNER-CTR UIC-MIDI to a PC with the USB cable using, "2 [Setting up PARTNER-CTR](#)" (page11) for reference, then power on the hardware.

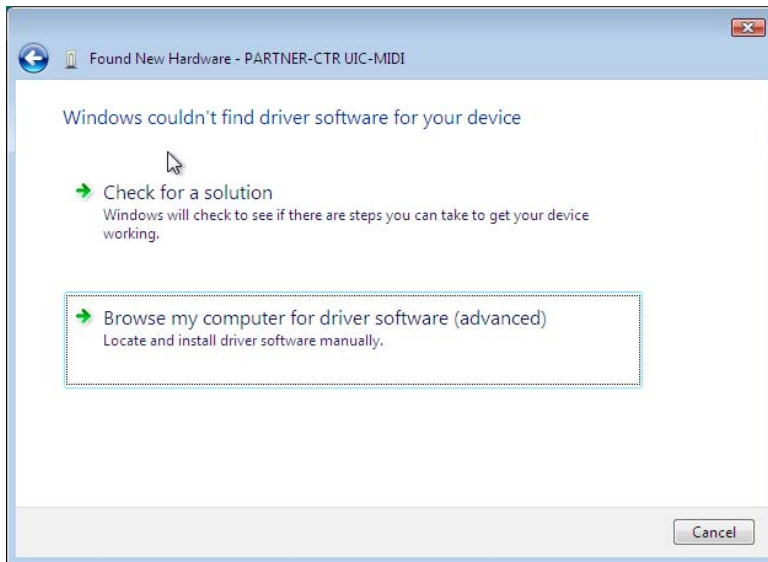
Installation Procedure for Windows Vista and Windows 7



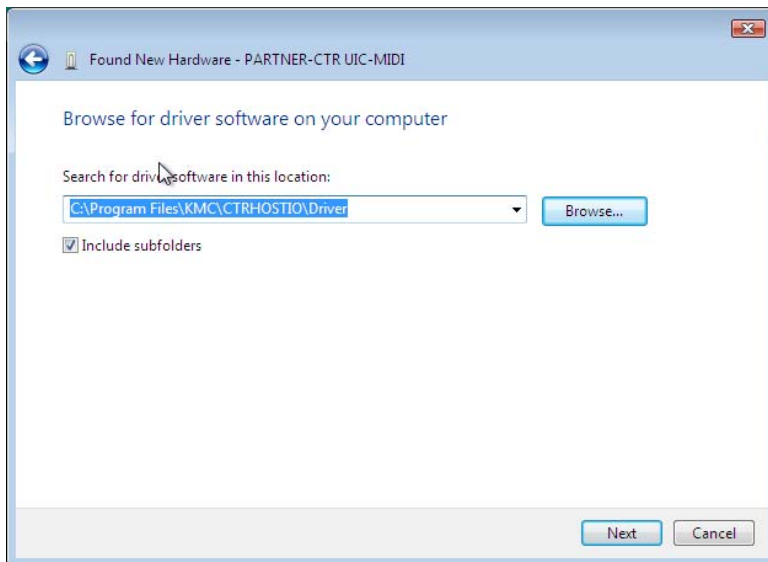
Once PARTNER-CTR UIC-MIDI is detected by the OS, the dialog shown on the left will be displayed. To Proceed, click [Locate and install driver software].



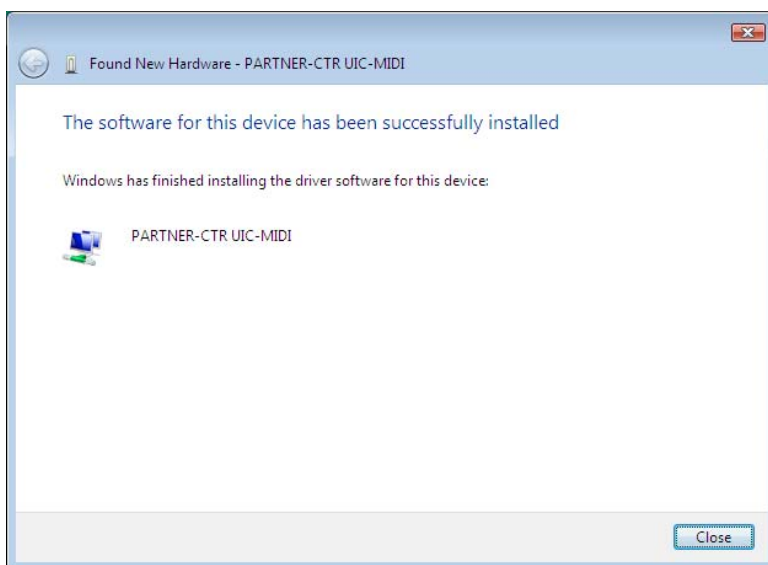
Select [I don't have the disc. Show me other options].



Click [Browse my computer for driver software (advanced)]



Specify the Driver folder*1 that is located in the installation folder created in "Installing / Uninstalling the Software", then click [Next] to continue.



If the USB driver was installed successfully, you will see the screen shown on the left.

*1 The default installation folder of the HIO-Daemon differs depending on the user account used during installation.

[Administrator Account]

C:\Program Files\KMC\ CTRHOSTIO

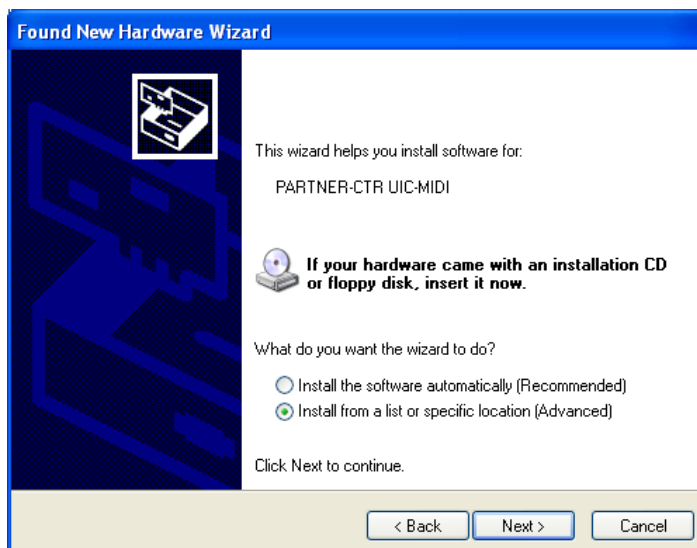
[Normal User Account]

C:\Users*User Name*\AppData\Roaming\KMC\ CTRHOSTIO

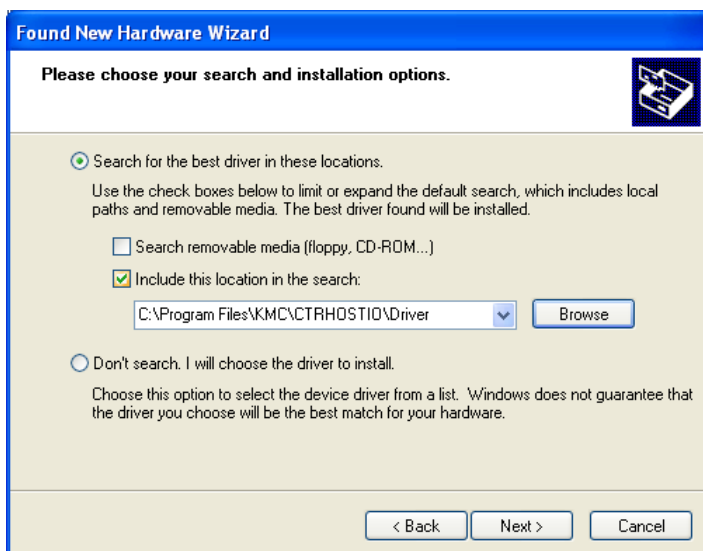
Installation Procedure for Windows XP



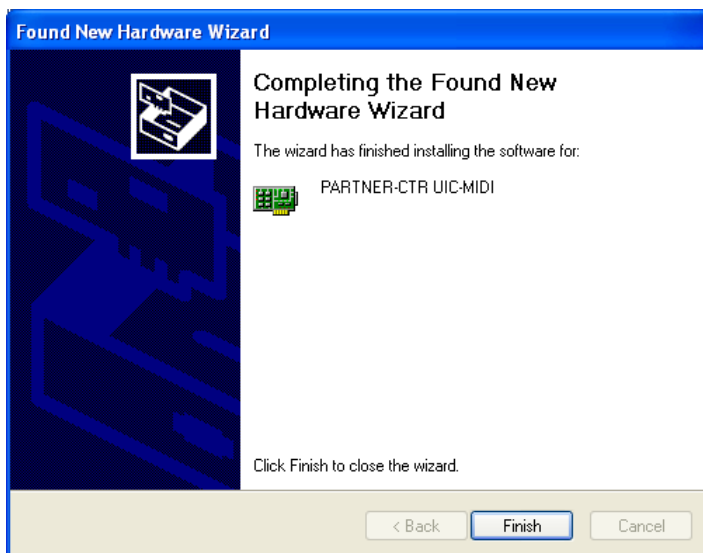
Select [No, not this time] and click [Next] to continue.



Select [Install from a list or specific location] and then click the [Next] to continue.



Select [Search for the best driver in these locations], then choose the [Include this location in the search] option. Specify the Driver folder*2 within your PARTNER-CTR installation directory, then click the [Next] to continue.



If the USB driver was installed successfully, you will see the screen shown on the left.

*2 The default installation folder of the HIO-Daemon differs depending on the user account used during installation.

Administrator Account

C:\Program Files\KMC\CTRHSTIO

Restricted Account

C:\Documents and Settings\User Name\Application Data\KMC\CTRHSTIO

6. Specification

6.1. Product Specification

Product name	PARTER-CTR UIC-MIDI
Connector	MIDI-IN x 1, USB x 1
Host interface	USB2.0
Power source	DC4.6V (AC adapter bundled)
Dimensions(Main unit)	Width 150mm x Depth 60 mm x Height 26mm
Weight	70g
Usage environment	Temperature 5 – 35 degrees C, Humidity 85% RH or below (no condensation)
Applicable standards	FCC PART15 SUBPART B CLASS A ICES-003 CLASS A EN55022/EN55024 EN61000-3-2/EN61000-3-3 AS/NZS CISPR22 CLASS A EN60950-1

PARTNER-CTR UIC-MIDI Setup Manual

First Edition, Issued in Dec. 2010

2'nd Edition, Issued in Feb. 2011



Kyoto Microcomputer Co., Ltd.