

Guide to Using Official Accounts in Miiverse

2015/02/02

Version 2.6

**The content of this document is highly confidential
and should be handled accordingly.**

Confidential

These coded instructions, statements, and computer programs contain proprietary information of Nintendo and/or its licensed developers and are protected by national and international copyright laws. They may not be disclosed to third parties or copied or duplicated in any form, in whole or in part, without the prior written consent of Nintendo.

Table of Contents

1	Introduction	4
1.1	About This Document	4
1.2	Terminology	4
1.3	Related Documentation	5
2	What Is an Official Account?	6
2.1	Special Features of Official Accounts	6
3	Rules and Policies for Official Accounts	11
3.1	Getting an Official Account	11
3.1.1	Console on Which the Official Account Is Used	11
3.1.2	Important: Managing Official Account Information	12
3.2	Miiverse Settings for Official Accounts	12
3.3	Posts from Official Accounts	15
3.3.1	Number of Official Accounts Allowed per Title	15
3.3.2	Postings to Avoid	15
3.3.3	Posting Restrictions	16
3.3.4	Restrictions on Adding URLs to Posts	16
3.3.5	Other Rules of Conduct	17
3.4	Notes	18
3.4.1	Player Marks	18
3.4.2	Announcement Communities	18
3.4.3	Opening a Community for Promotional Purposes Before Launch	18
4	Using Web Miiverse	20
4.1	Limitations of Web Version	20
4.2	Web Version Posting and Commenting	20
4.2.1	Cautions Regarding Application Data	22
	Revision History	23

Figures

Figure 2-1	Official Account with "Verified User" Checkmark on Mii Icon	6
Figure 2-2	Displaying Multilanguage Posts	7
Figure 2-3	Wii U Version URL Entry Text Box	8
Figure 2-4	Folded-Up Display	10
Figure 3-1	How to Configure an Official Account	14
Figure 3-2	URL Entry Text Box	16
Figure 3-3	Player Mark	18
Figure 4-1	Multilanguage Post Screen	21

1 Introduction

1.1 About This Document

This document describes the details of official accounts on Miiverse, and rules for their use. It is aimed at individuals and corporations who are considering the acquisition and operation of an official account on Miiverse. When operating an official account, you must follow all of the applicable guidelines in this documentation. You must also follow the recommendations as much as possible.

Note: One of the goals of this document is to reduce problems with official accounts. Adherence to these guidelines, however, does not guarantee that all problems can be avoided. When operating an official account, observe all associated laws and regulations in addition to adhering to the specifications in this documentation.

1.2 Terminology

- Miiverse

A new network service built into the Wii U console and the Nintendo 3DS (referred to hereafter as "3DS") for connecting people around the world through their Mii characters.

- Web Miiverse

A version of Miiverse that can be accessed from an Internet-connected device other than a Wii U console or a 3DS system, such as a computer or smartphone.

- Official account

An official account for a software title. It is owned by the representative of the software developer or publisher, or other appropriate individual or corporation. To prevent impersonation, the identity of the user is certified by Nintendo. Official accounts are for verified users. For more information, see Chapter 2 What Is an Official Account? in this documentation.

- Parental Controls

A feature that allows parents and guardians to block minors in their households from using or purchasing age-inappropriate content.

- WaraWara Plaza

The entire space shown on the TV screen when the Wii U Menu starts. It shows posts and other content from Miiverse.

- Application data

This data can be set from an official account and attached to posts. It can be freely used in applications that receive posts (`app_data` files). A maximum of 1 KB of data can be attached. This is not displayed in the Miiverse application.

1.3 Related Documentation

- **Wii U Planning and Operation Guide: Miiverse Edition**

For an overview of the Wii U Miiverse and Miiverse features, see the following chapters. If the chapter numbers change in a future revision, please read the corresponding chapters.

- 2 What Is Miiverse?
- 5 Miiverse Application
- 6 Post Application
- 7 WaraWara Plaza Screen
- 10 Miiverse Operational Policy

- **CTR Planning and Operation Guide: Miiverse Edition**

For an overview of the 3DS Miiverse and Miiverse features, see the following chapters. If the chapter numbers change in a future revision, please read the corresponding chapters.

- 2 What Is Miiverse?
- 3 Miiverse Application
- 6 Miiverse Operational Policy

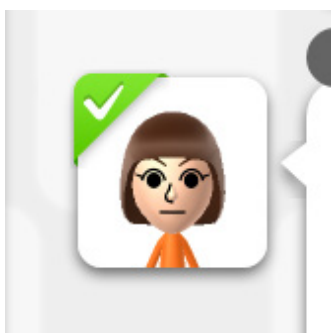
2 What Is an Official Account?

Verified users who are registered under an official account can make posts to communities to **enhance community participation, the gaming atmosphere, and the user experience**.

The producers, directors, developers, and others involved with the application are eligible for official accounts.

In an official account, a green checkmark is added to the Mii icons of verified users, indicating that their identity has been confirmed. This confirmation is to prevent impersonation of an official account in Miiverse.

Figure 2-1 Official Account with "Verified User" Checkmark on Mii Icon



(The image above is from the Wii U Miiverse.)

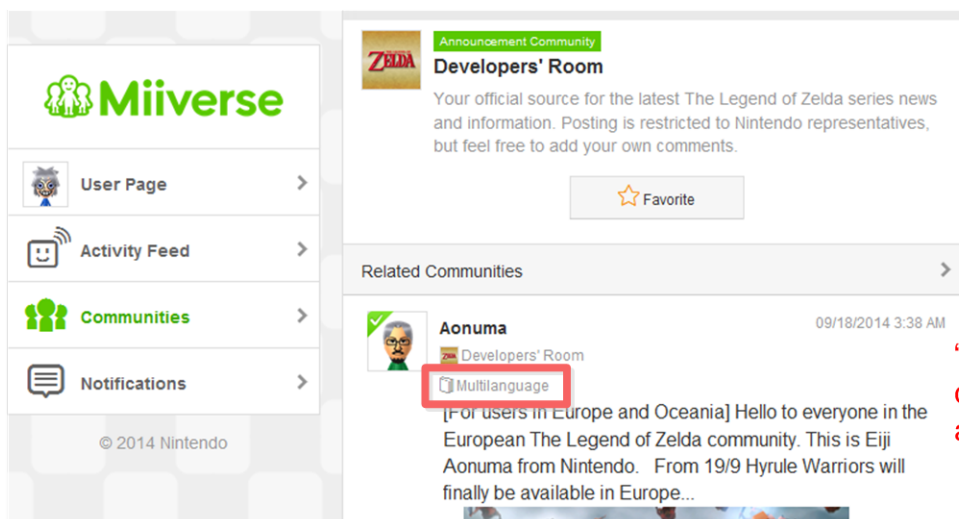
2.1 Special Features of Official Accounts

The following special features that are available to official accounts are not available to general users. (They can be used from a Wii U console, a 3DS system, or a web browser.)

- Posts from official accounts are temporarily given priority in the Wii U WaraWara Plaza.
 - Unlike with posts from general users, posts from other regions also appear.
 - The specifications may prevent some posts from appearing.
- *Multilanguage posts* are possible. A multilanguage post allows the simultaneous entry of multiple languages in one post (only for web versions).
See Section 4.2 Web Version Posting and Commenting for more on the use of multilanguage posts.
 - When a user views a multilanguage post, it is initially displayed in the language for which the console is configured. The UI indicates that the language can be switched, so display of the post can be changed to other languages.
 - Comments attached to a post are handled as usual, with all comments being attached to the same post. They are not separated by region.

Figure 2-2 Displaying Multilanguage Posts

List Screen

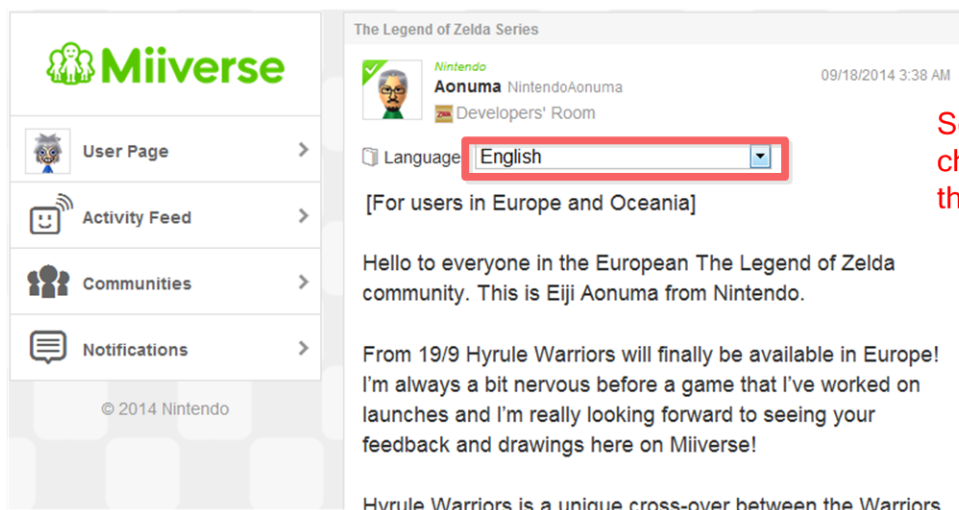


“Multilanguage” is displayed when it is a multilanguage post.



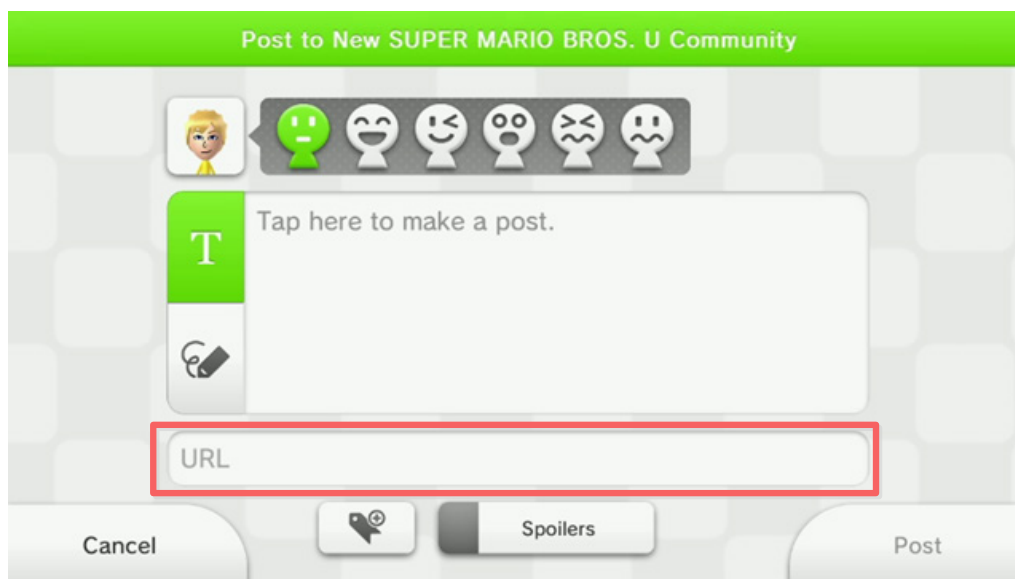
Select the post

Post Information Screen



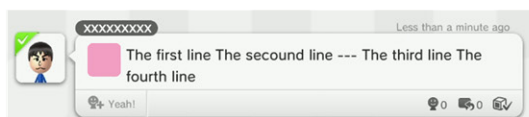
Select a language to change the display to that language.

- URLs can be added to posts (for Wii U consoles and web browsers only).
 - For official accounts only, a URL entry text box is displayed on the posting screen of the Miiverse application when posting. For using with a web version, see Section 4.2 Web Version Posting and Commenting.

Figure 2-3 Wii U Version URL Entry Text Box

- If you enter a link to a website in the URL entry text box, a button for launching the Internet browser is also added to the post.
 - If you enter a link to a YouTube video, the video can play directly in the post.
Format: http://www.youtube.com/watch?v=*****
- Posts can have attached application data that can be used in applications (only for web versions). See Section 4.2 Web Version Posting and Commenting for more information on using attached application data.
- Posts or comments can use image files that are saved on PCs as attachments, as the equivalent of the image for hand-written memo posts (only for web versions). See Section 4.2 Web Version Posting and Commenting for more on using image files for hand-written memos.
The format is limited to the following.
 - A 1-bit monochrome bitmap BMP image, 320 pixels wide by 120 pixels high
To create a monochrome bitmap image, save in the Monochrome Bitmap format with an image editing program that supports the format, such as the Paint feature of Microsoft Windows.
- Posts or comments can use image files that are saved on PCs as attachments, as the equivalent of the image for screenshots (only for web versions). See Section 4.2 Web Version Posting and Commenting for more information on using image files for screenshots.
The file size is limited to 512 KB (524,288 bytes), In addition, the format is limited to any of the following
 - A JPEG image (baseline format) with a display size of any of the following resolutions
800 pixels in width by 540 pixels in height

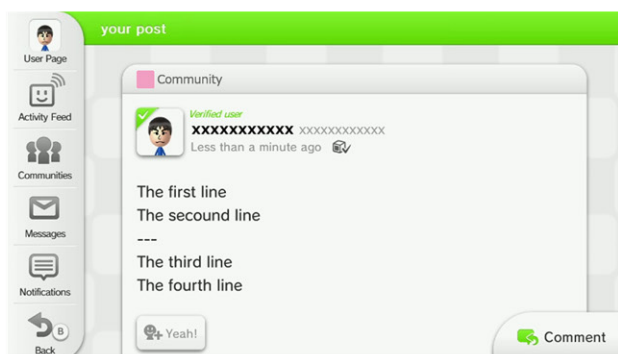
- 400 pixels in width by 240 pixels in height
- 320 pixels in width by 240 pixels in height
- An MPO image, 400 pixels in width by 240 pixels in height
- General users cannot report posts from verified users of official accounts, or add spoiler alerts.
- Official accounts can create posts and comments that exceed the limit for general users.
(For visibility and ease of viewing, Nintendo recommends that the number of written characters in both posts and comments be up to around 1000 characters. Slightly exceeding that is not an issue.)
- Official accounts have an "affiliation" attribute that appears next to the nickname and other attributes on the detailed post view screen and profile.
- Verified users of official accounts can comment on a post, even if the maximum number of comments for that post has been reached (currently, the maximum is 1000).
- If a user with an official account comments on his or her own post, then that comment appears on the post's view page, even if the comment list is collapsed due to the number of comments.
 - You can prevent general users' comments from coming between your post and comment (you may want to do this in cases like the one above). For example, to do so from "Miiverse Settings," select the button next to "Who can comment on your posts?" then select "Wii U Friends Only."
- Posts from official accounts are automatically treated as "Player posts" regardless of whether the user has played. See Section 3.4.1 Player Marks for details.
- From the top page of Miiverse you can link to a list of **Posts from Verified Users** and view the latest posts from official accounts.
 - The list displays the most recent post from each official account (one post from each verified user).
 - The opening sentence of the "Profile comment" is displayed with the post.
 - Comments about other posts and posts to **Own Activity** are not displayed in this list.
- Posts from official accounts can use the folded-up display feature. When there are three or more hyphens (---) entered alone on a row within a post, subsequent text will be hidden (folded up). Select **Read the Rest** to display the full text.
 - When there are multiple instances of triple hyphens, only the last will be folded up.
 - When there is no text after a triple hyphen, the triple hyphen will not trigger the fold-up effect.

Figure 2-4 Folded-Up Display**The Post Screen****Post****Post List Screen**

Posts are not folded up here.

**Select Post****Post Information Screen**

Posts are displayed folded up here.

**Read More**

The post expands and the full text is displayed.

Note: The features that can be used when a general user is posting or commenting can also be used by official accounts (for example, Mii expressions, spoiler settings, manual input, text input for web versions, and official tag settings).

3 Rules and Policies for Official Accounts

Nintendo has game producers and developers register as verified users under Official Accounts in their application's Miiverse Communities to enhance community participation and gaming atmosphere. This chapter describes the policy for operating official accounts, and how to use them as a verified user.

3.1 Getting an Official Account

To get an official account, follow the steps below. Follow these steps on the Wii U or 3DS that will be used for posting.

1. Get the Nintendo Network ID that you want to use for your official account as the Wii U or 3DS user you will use to actually make posts.
 - a) You can use your current Mii for this official account. You can also import a Mii into your Wii U console from a QR Code, or the 3DS Mii Maker. (You cannot import copy-prohibited Mii characters.)
 - b) Make sure that your Mii looks like a person. The use of excessively exaggerated features is prohibited. For example, you cannot make your Mii look like an animal or a space alien. The use of facial parts for something other than their intended purpose (such as using eye parts as something other than eyes) is also prohibited.
2. Log in as the desired (verified) user and then launch Miiverse with the Wii U or 3DS and complete the initial setup. If you are able to view Miiverse communities, the preparations for using this account as your official account are complete.
3. Contact your Nintendo representative and give them the Nintendo Network ID of your desired (verified user) account, as well as the affiliation that is to appear next to posts (can be up to 20 characters). Once your request has been processed, the "verified user" mark appears on your Mii. However, some settings must be made before you can actually start using the official account. After the "verified user" mark appears on your Mii, see Section 3.2 Miiverse Settings for Official Accounts and make the necessary settings on the Wii U or 3DS that will be used for posting.

Note: Contact Nintendo with the affiliation name. Normally, the affiliation name is the name of the company or organization to which the user belongs. If there is no affiliation, the user type, role, or title in relation to the software development is used.

If you are launching Miiverse for the first time, be sure to read through the *Miiverse Code of Conduct*.

3.1.1 Console on Which the Official Account Is Used

A Nintendo Network ID can be shared by a Wii U console and a 3DS system, but cannot be shared between two or more Wii U consoles or between two or more 3DS systems. If there is an update that requires the user to accept the "Nintendo Network User Agreement" again, then **the Nintendo Network ID will be unusable until consent to the user agreement is made on the console on which the Nintendo Network ID was registered.**

Therefore, create your official account on the Wii U console or 3DS system you will use to actually make posts.

3.1.2 Important: Managing Official Account Information

The web version of Miiverse can be accessed by ordinary browsers. As a result, anybody with an Internet-enabled device can access a Miiverse account, as long as they enter the correct Nintendo Network ID and password.

You must manage the password of your official account with great care. If you fail to manage your password adequately, it may be used by a third party without your approval.

Nintendo recommends choosing a complex password, such as a random string of numbers and upper and lowercase letters.

3.2 Miiverse Settings for Official Accounts

You must make the following settings on a Wii U or 3DS before using an official account.

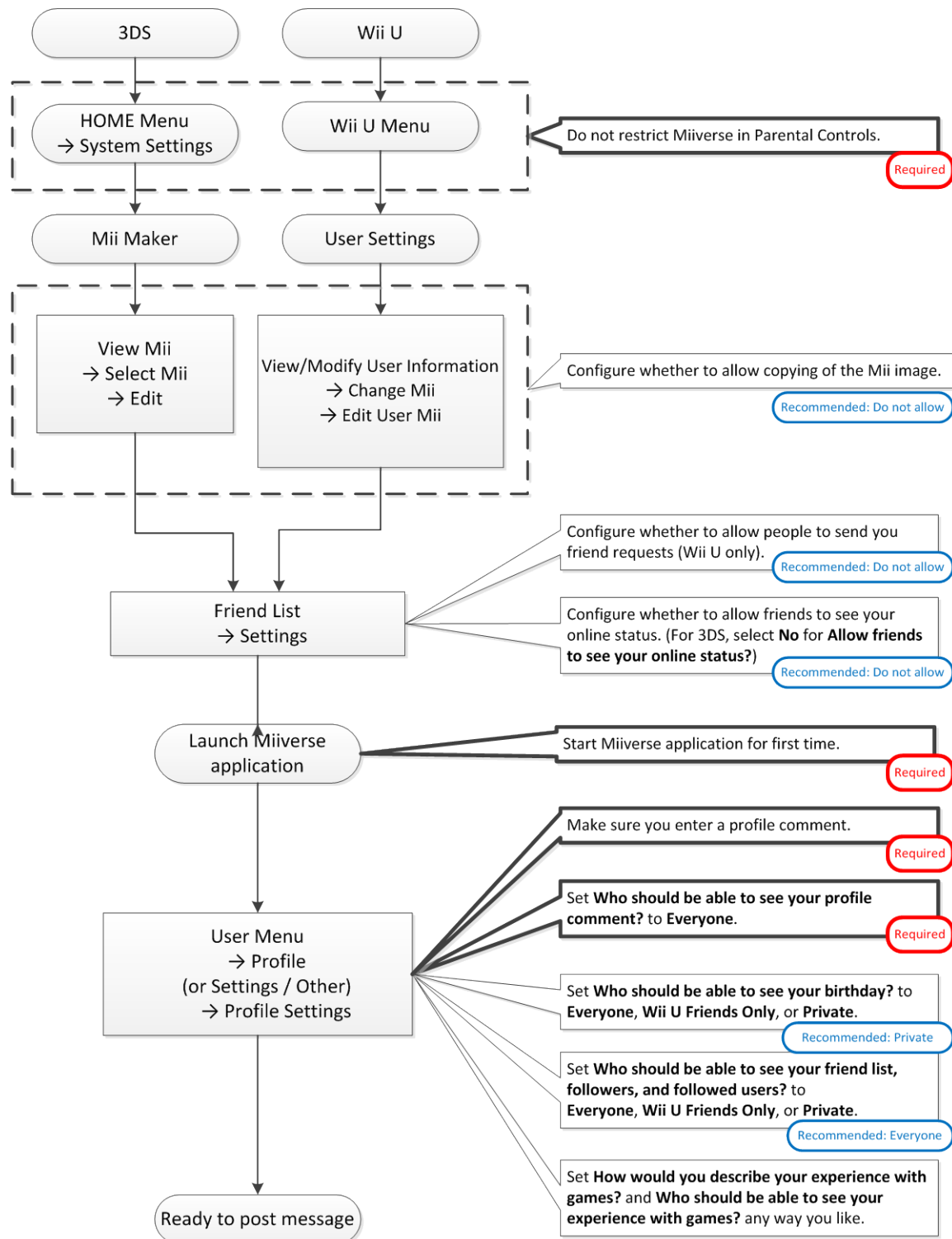
- Make your "Profile comment" text visible to everyone/public.
 - Set this from the Miiverse application. Select **User Menu**, then **Profile**, and then **Profile Settings**.
- Enter a profile for your official account before you start posting.
 - Set this from the Miiverse application. Select **User Menu**, then **Profile**, and then **Profile Settings**.
 - Include information that makes it clear to other users that this is an official account. Such information may include things like the name of your company, your position, and your title.
- Do not restrict Miiverse in Parental Controls.
 - From the Wii U Menu (or **System Settings** on the HOME Menu for 3DS systems), select **Parental Controls > Parental Controls Settings**, and make sure that Miiverse is not restricted.

Although it is not required to configure the following settings as recommended by Nintendo, you should configure them intentionally to reflect the account's status. It is prohibited to make posts without first checking your settings (and leaving them with the defaults or not set).

- Configure whether to allow copying of the Mii image.
 - Nintendo recommends prohibiting copying.
 - How to set for Wii U consoles:
 - On the User Selection screen, select **User Settings**. Next, select **View/Modify User Information**, then **Change Mii**, and then **Edit User Mii**.
 - For 3DS systems:
 - From the HOME Menu, launch Mii Maker, select **View Mii Characters** to choose a Mii,

- and select **Edit** to configure this item. Configure whether to allow friend requests (for Wii U consoles only).
 - Nintendo recommends not allowing friend requests.
- Launch the friend list, and then select **Settings > Change Settings** to configure this item. Configure whether to let friends view online status. (**No** on 3DS systems)
 - Nintendo recommends not making this information public (**No** for **Allow friends to see your online status?** on 3DS systems)
 - How to set for Wii U consoles:
From the HOME Menu, launch the friend list, and then select **Settings > Change Settings** to configure this item.
 - How to set for 3DS systems:
Launch the friend list, and then select **Settings > Friend Notification Settings** to configure this item.
- Configure whether to make your birthday public (visible to everyone, Wii U friends only, or private).
 - Nintendo recommends not making this information public.
 - Set this from the Miiverse application. Select **User Menu**, then **Profile**, and then **Profile Settings**. Set sharing of friend list and followers to everyone, Wii U friends only, or private.
 - Nintendo recommends setting this to "everyone" only when the account does not accept friend requests because only the number of followers and followed users are shown when the account is configured in this manner.
 - Set this from the Miiverse application. Select **User Menu**, then **Profile**, and then **Profile Settings**.

You can begin posting to communities after you have obtained an official account and configured all of these settings.

Figure 3-1 How to Configure an Official Account

Note: The following settings are used for the official accounts of Nintendo employees.
 Do not allow copying of Mii image.
 Do not allow people to send you friend requests.

Do not make online status public (**No** for **Allow friends to see your online status?** on 3DS systems).

Do not make birthday visible.

Allow everyone to see your friend list, followers, and followed users.

Set "game experience visibility" to any value.

Note: The country of official accounts is not shown to other users.

3.3 Posts from Official Accounts

Posts can be made from official accounts once the community is created.

The following restrictions apply to the creation and use of official accounts.

Note: Once a post or comment has been made, it cannot then be edited. However, it is possible to delete a post or comment from the Wii U or 3DS Miiverse application or from the Web version of Miiverse, provided you use the same account as that which made the post or comment. Even when deleting, however, there is the possibility that the post or comment has already spread to general users during the interval between post and deletion, so exercise sufficient care when crafting posts or comments in the first place.

3.3.1 Number of Official Accounts Allowed per Title

Up to five official accounts can post to a title's community. This number includes official accounts that were created and used before the title's community was opened, so you will not necessarily be able to apply for five new official accounts every time a new community is opened.

For the reasons below, Nintendo recommends using the same official account continually in multiple titles.

- It is easier to communicate to users if the official account is followed.
- It avoids having too many sources of information. This can happen if you have too many official accounts.
- It is sometimes more appropriate to make a post from an official account that has been used for the same purpose in the past, rather than registering a new official account.

Note: Contact Nintendo support at support@noa.com if you would like to use six or more official accounts in a single community.

3.3.2 Postings to Avoid

You must take special care to avoid the following, because posts from official accounts cannot be reported by general users.

- Continuously posting content perceived as spam.
- Posting spoilers without spoiler alert flags.
- Promoting interests other than your own company's products.

- However, information related to a tie-in with the title (related contents, publications, CDs, event promotions, or series or sequels on Nintendo platforms) can be posted. Contact Nintendo support for details.
- Promoting products for non-Nintendo platforms.

3.3.3 Posting Restrictions

Posts from official accounts **must not** contain the following types of language or content.

- Screenshots should be appropriate for all ages. Avoid images with extreme or other inappropriate content.
- Only post videos to communities other than the title's community if they are appropriate for all ages. Avoid graphic or otherwise inappropriate videos.
- Avoid direct calls to action. For example, do not include the words "buy now." However, it is fine to make an indirect call to action. For example, you could include the words, "you can buy now."

3.3.4 Restrictions on Adding URLs to Posts

Official accounts have the special ability to add URLs to posts. When adding a website link to a post, enter the website URL to the URL entry text box. When adding a YouTube link to a post, enter the URL using the following format.

Format: http://www.youtube.com/watch?v=*****

Figure 3-2 URL Entry Text Box



Links to the following websites can be added to a post.

- Your company's website(s)
- Videos on your company's official YouTube channel.
- Sites that you can control appropriately, such as your company's official account on Twitter or Facebook. (Below, these are referred to collectively as "your sites.")

However, links to websites such as the following are prohibited.

- Links to general websites other than those included in "your sites," above.
- Direct links to e-commerce sites (sites that generate charges for physical goods, downloads, services, or any other commerce), even if they are included in "your sites."

URLs added to posts must also meet the following additional requirements. Pages accessible from the added URL page do not need to meet these requirements.

- The post is directly relevant to the target community or application (game).
For example, it could be a special page just for the application (such as one offering game-related gifts, or describing game strategy).
- The content of the page is not exempt from the software rating of the community's application (game).
For example, if the application has a CERO rating of A, you must not add the URL of a page whose content is equivalent to a CERO rating of B. When posting to communities that are not related to the application, only add URLs to pages that are appropriate for all ages.
- It is continuously available.
The poster or the poster's organization must maintain control of the linked page. The page must be reachable at all times; if it is only available for a limited time, replace it with a page stating this fact after the period of availability ends.
- The page can be displayed and controlled appropriately in the Internet browser.
Make sure that the page displays properly and that any controls on the page operate properly in the Internet browser.

If you add a URL to a post, include text or a drawing indicating what the added URL links to.

3.3.5 Other Rules of Conduct

You must also obey the following rules of conduct.

- The first time you post from an official account, or when posting from an official account that does not post regularly, Nintendo recommends that you include a brief self-introduction that indicates you are posting from an official account.

Examples:

"Hi, this is XX, Director of Y. ..."

"Hi, this is XX from Nintendo. ..."

- You are free to interact with consumers, provided it is within the scope of the *Miiverse Code of Conduct*.
Each company is responsible for its own communications.
- Nintendo recommends configuring your posts to allow comments. (Contact Nintendo support at support@noa.com if you do not want to allow comments.)
- You are free to post to all of your communities. You do not need to restrict your posts to a specific application.

- It is prohibited to make new posts to other companies' communities. However, you can comment on posts and give them Yeahs. In addition, you can make new posts for collaborative promotional purposes and the like to the communities of publishers, providing you have received their consent.

3.4 Notes

3.4.1 Player Marks

Posts from official accounts are automatically assigned a player mark regardless of whether the user has played the title. The player mark icon is further described at the end of the *Miiverse Code of Conduct*, which is displayed when a user launches Miiverse for the first time.

Note that the player mark is added even when posting to communities without related titles, such as special communities.

Figure 3-3 Player Mark



3.4.2 Announcement Communities

In addition to the default official community and the publisher's official community, you can create an "announcement community," which is a special type of publisher's official community for distributing announcements. You can create one announcement community per title. If you are interested in creating this type of community, read the *Application Procedures for Official Communities*, and then contact Nintendo support at support@noa.com. An announcement community has the following features.

- You can configure the Nintendo Network ID of a specific user (official account), and prevent any other users from making new posts to the community.
- Once you post to the community, a link to "new post in the announcement community" appears on the screen of the title's default official community. (The link does not disappear until tapped.)

3.4.3 Opening a Community for Promotional Purposes Before Launch

As a general rule, communities are opened on the same day that the application goes on sale (or in the case of downloadable software, at the time that distribution begins). However, you might want to open the default official community before launch, for promotional purposes or other reasons. If you are considering doing this, refer to the following information and contact Nintendo support at support@noa.com.

3.4.3.1 Implementable Titles and Timeframe

- The community can be opened early only for a title that has passed Lotcheck and has a set launch date.

- The community can be opened at any time after the title has passed Lotcheck.

3.4.3.2 Who Can Post to the Community

Until the launch of the title (or the start of distribution of a downloadable title), only users with Nintendo Network IDs for that title's official account can post to the community.

Note: Follow the procedures described in this document and prepare official accounts for users who will be posting to the community well in advance.

3.4.3.3 Recommendations

- Although the frequency of posting to the community varies depending on when the community is opened and the duration of the promotion, you should post at least once a week.
- We suggest that you allow regular users to make comments to the posts.
- We suggest that you continue to make posts with appropriate frequency and content on a given subject so you can maintain interest and continue to receive responses from general users. If you do not, off-subject comments might accumulate, overshadowing the original subject and inviting spoiler comments even before the title is launched.
- Official accounts have the same capabilities to post as they do when the community is opened at the normal time. For more information, see Section 2.1 Special Features of Official Accounts.

3.4.3.4 Handling Demo Software

If you are considering placing a link in the community to Nintendo eShop when you begin to distribute demo software, contact Nintendo support at support@noa.com.

4 Using Web Miiverse

4.1 Limitations of Web Version

Miiverse can be used from a web browser. Miiverse has the following limitation when accessed from an official account using an ordinary web browser.

- The language setting of your post will be that of the Wii U console or 3DS system that last accessed Miiverse.
- It might be necessary to consent to the “Nintendo Network User Agreement” again if it is updated. In this case, you will not be able to use your account in the web version until you consent to the agreement from the Wii U console or 3DS system.

4.2 Web Version Posting and Commenting

When the official account posting screen is opened, it becomes an official account posting screen with custom features specifically for that screen. You can enter a URL or attach an image file or application data saved on your PC to your post or create a multilanguage post. You can use your browser's copy and paste feature when making your post.

- The compose post screen includes the URL entry text box and an input form to attach image files or application data.
- Select **Multilanguage Post** and mark the check boxes for the regions you will be posting for when making a multilanguage post. The form for the selected region is displayed.
 - The regions marked under **Please select the region(s) with which you want to share this post** are posted in the Miiverse's **Post from Verified Users**.

Figure 4-1 Multilanguage Post Screen

Miiverse

User Page >

Activity Feed >

Communities >

Notifications >

© 2014 Nintendo

Standard Post ☒ Multilanguage Post

Posting Languages

☒ Japanese ☒ English ☒ French ☒ German ☒ Italian ☒ Spanish ☒ Dutch ☒ Portuguese ☒ Russian

Japanese

Japanese

English

English

French

French

German

German

Italian

Italian

Spanish

Spanish

Dutch

Dutch

Portuguese

Portuguese

Russian

Russian

URL

Screenshot JPEG, size : 800x450

ファイルを選択 選択されていません

app_data size : <= 1024byte

ファイルを選択 選択されていません

Please select the region(s) with which you want to share this post.

☒ Japan

☒ Spoilers

Send

- Do not use platform-dependent characters.
- Once an image for a handwritten memo is set, it cannot be cleared. To change from a handwritten memo post to a text post, you need to reload the page.
- An error will result if you try to enter text when an image for a handwritten memo post is set.

See Section 4.2.1 Cautions Regarding Application Data for more information on application data.

Note: We recommend the use of either Google Chrome or Mozilla Firefox for posting or commenting from an official account. Internet Explorer cannot be used. In addition, tablet devices and Android smartphones cannot be used.

Do not enter a YouTube video URL and attach an image file or application data to your post at the same time. Posts with this combination are not supported. Combinations of URLs that are not YouTube videos (official websites, etc.) and image files are not a problem.

4.2.1 Cautions Regarding Application Data

Posts and comments from official accounts can attach application data (`app_data` files). Application data attached to posts can be used in that application.

Take note of the following cautions when posting application data files.

- Always attach to a post or comment with an official account for that application so that the data can be used with the application. For example, do not attach in the following manners, which would not allow the application data to be used.
 - Do not attach to the community of a different application (for example, posting application data for application A to the community for application B).
 - Do not attach to a comment when the application specifications only allow use of application data that is attached to a post.
- After verifying the validity of the data, attach only valid data. (Verify operations.) The application data might cause a problem on the application side.

Use the posting feature in the OLV library for application data debugging. The Web version of Miiverse cannot be used from development environments. There are no differences between the application data posted with the Web version of Miiverse and the application data posted with the OLV library.

See *Planning and Operations Manual: Miiverse Edition* for details on the OLV library. (The 3DS will be able to use the OLV library after it is provided for that platform. There are plans to provide a version of the OLV library for the 3DS.)

- As with the application and associated data, the application data must follow the guidelines.
- If data is discovered that causes problems or if data that does not work as expected is attached, remove the post or comment immediately.
 - In urgent cases, the data may be deleted by Miiverse administration, but to the extent possible, please delete such data from the posting account.

Revision History

Version	Revision Date	Category	Description
2.6	2015/02/02	Additions	<ul style="list-style-type: none"> 3.4.3 Opening a Community for Promotional Purposes Before Launch
2.5	2014/12/03	Changes	<ul style="list-style-type: none"> 2.1 Special Features of Official Accounts Added a limit to the size of image files that can be attached to posts. In the section about the specification for showing the official account user's comments on his or her own posts even when the comment list is collapsed, deleted the note that the specification is only for notifications communities 3.1.1 Console on Which the Official Account Is Used Added a note that the "Nintendo Network User Agreement" must be agreed to again if updated.
2.4	2014/09/16	Changes	<ul style="list-style-type: none"> 2.1 Special Features of Official Accounts Added information on multilanguage posts. Deleted the information on newlines, since entry is possible from sources beyond official accounts now. Added information on multilanguage posts. Added screenshots. Added that a 1-bit BMP image can be posted instead of a hand-written memo post. Added that an MPO image can be posted as a screenshot. Added information on folded up display. Added screenshots. 4.2 Web Version Posting and Commenting Unified web version posting and commenting under one title. Added an indication that tablet devices and Android smartphones cannot be used. Added information on multilanguage posts. Added a screenshot.
		Deletions	<ul style="list-style-type: none"> 4.2 Special Features of Official Accounts Merged into Section 2.1 Special Features of Official Accounts 4.3.1 Special Process for Posting from an Official Account 4.3.2 Special Process for Commenting from an Official Account Posting to Own Activity from an Official Account

Version	Revision Date	Category	Description
2.3	2014/05/27	Additions	<ul style="list-style-type: none"> 1.1.1
		Changes	<ul style="list-style-type: none"> 1.2 Terminology Integrated the terms “official account” and “verified user.” 2.1 Special Features of Official Accounts Added a description about the page with a list of posts from verified users. 3.2 Miiverse Settings for Official Accounts Added a description about the timing when posting becomes possible. 3.3.5 Other Rules of Conduct Added to the description of when it is all right to post to the communities of other companies
2.2	2014/04/07	Changes	<ul style="list-style-type: none"> Overall Changed "CTR" to "3DS." Revised inconsistencies in notation. 3.1 Getting an Official Account Noted in the leading sentences that the Wii U or 3DS that will be used for posting is required. <p>Changed the information about the screen that appears when the initial setup is completed.</p> <p>Noted that some settings must be made before an official account can be used.</p> <ul style="list-style-type: none"> 3.3.4 Restrictions on Adding URLs to Posts Deleted the part explaining the prohibition on links to videos or content expected to be broadcast on TV. 4.3.3 Cautions Regarding Application Data Noted how to debug application data.

Version	Revision Date	Category	Description
2.1	2014/03/11	Additions	<ul style="list-style-type: none"> 4.3.3 Cautions Regarding Application Data
		Changes	<ul style="list-style-type: none"> Overall Corrected errors and unified notation 1.2 Terminology Added "Application Data." 2.1 Special Features of Official Accounts Added that posts from other regions are also shown. Added that posts can attach application data. Added that posts and comments that exceed the character count for general accounts are possible. Added that line returns can be used in the body. 3.3.4 Restrictions on Adding URLs to Posts Added a screenshot. 3.4.2 Announcement Communities Moved the description of the character limit. 4.2 Special Features of Official Accounts Added that posts can attach application data. 4.3.1 Special Process for Posting from an Official Account Added that posts can attach application data. Updated the screenshot. 4.3.2 Special Process for Commenting from an Official Account Added that posts can attach application data. Updated the screenshot.

Version	Revision Date	Category	Description
2.0	2014/01/17	Changes	<ul style="list-style-type: none"> • Overall Revised the descriptions so that they also support CTR systems and are not specific to the Wii U console. Added procedures for the CTR system. Corrected notation variations. • 2.1 Special Features of Official Accounts Added a screenshot. Added that posts from an official account are automatically treated as Player posts. • 3.2 Miiverse Settings for Official Accounts Added an image. • 3.3.2 Postings to Avoid Added exceptions to the restrictions for promoting interests other than one's own company's products. • 3.3.4 Restrictions on Adding URLs to Posts Added the procedure for adding URLs to posts. • 3.4.1 Player Marks Deleted the description that Player marks are given only if the title has been played. Added that the Player mark is given even for communities without related titles. • 4.1 Limitations of Web Version Added that consent to the Nintendo Network Agreement is required when the agreement is updated. • 4.2 Special Features of Official Accounts Added the size of the image files that can be posted. • 4.3.1 Special Process for Posting from an Official Account Added a note that posts combining YouTube videos and attached images are not supported. Added a screenshot. • 4.3.2 Special Process for Commenting from an Official Account Deleted the description of the URL entry text box. Added a screenshot.
1.5	2013/08/27	Changes	<ul style="list-style-type: none"> • 2.1 Special Features of Official Accounts Added to the description for adding URLs. Added explanation about the features that can be used with an official account. • 3.3.4 Restrictions on Adding URLs to Posts Added a referent. • 4.2 Special Features of Official Accounts Added a description about adding URLs with the web version. • 4.3.1 Special Process for Posting from an Official Account Added a description about the compose post screen. • 4.3.2 Special Process for Commenting from an Official Account Added a description about the compose comment screen.

Version	Revision Date	Category	Description
1.4	2013/06/17	Additions	<ul style="list-style-type: none"> • 3.4.1 Player Marks Created a subsection from some of the content of 3.4 Notes. • 3.4.2 Announcement Communities Created a subsection from some of the content of 3.4 Notes. • 4.3.1 Special Process for Posting from an Official Account Created a subsection from some of the content of 4.3 Posting from the Web Version. • 4.3.2 Special Process for Commenting from an Official Account
		Changes	<ul style="list-style-type: none"> • 2.1 Special Features of Official Accounts Deleted mention of the web version of Miiverse. • 3.1 Getting an Official Account Revised the contact information. • 3.3 Posts from Official Accounts Added a caution that posts made from official accounts cannot be edited. • 3.3.5 Other Rules of Conduct Added that each company bears the responsibility for interactions with customers. • 3.4.2 Announcement Communities Revised and appended the text on the number of characters in posts and comments. • 4 Using Web Miiverse Revised the level of the subsections. • 4.1 Limitations of Web Version Deleted two of the limitations. • 4.2 Special Features of Official Accounts Moved this section's location. • 4.3 Posting from the Web Version Moved some content to subsections. Added a note about which browsers can be used.
1.3	2013/05/30	Changes	<ul style="list-style-type: none"> • 3.1 Getting an Official Account Indicated that using parts for something other than their intended purpose is prohibited.

Version	Revision Date	Category	Description
1.2	2013/05/20	Additions	<ul style="list-style-type: none"> • 1 Introduction • 2 What Is an Official Account? Moved some of the content to "3 Rules and Policies for Official Accounts." • 3.1.2 Important: Managing Official Account Information • 3.3.3 Restrictions on Post Content • 4 Using Web Miiverse
		Changes	<ul style="list-style-type: none"> • Changed the chapter structure. • 2 What Is an Official Account? Added the following items from before this was content moved. Described official accounts. Described the features available with official accounts. • 3.1 Getting an Official Account Described restrictions on Mii characters that can be used. Noted that you must communicate your affiliation when obtaining an official account. • 3.1.1 The Console on Which the Official Account is Used Removed content relating to requirement to obtain official accounts for all regions. • 3.2 Miiverse Settings for Official Accounts Described publication of followers and followed users. Added Figure 3-1 How to Configure an Official Account • 3.3.1 Number of Official Accounts Allowed per Title Changed the name of the section. Added recommendation to reuse official accounts. Fixed typos. • 3.3.4 Restrictions on Adding URLs to Posts Described URLs that can be linked to. Described conditions for attaching URLs. • 3.3.5 Other Rules of Conduct Added content related to allowing comments. • 3.4 Notes Noted that the Player mark will not appear automatically, even for official accounts. Added information about announcement communities.

Version	Revision Date	Category	Description
1.1	2013/01/07	Additions	<ul style="list-style-type: none"> 1.4.1 Number of Official Accounts Allowed Per Community 1.4.2 Restrictions on Post Content 1.4.3 Restrictions on Adding URLs to Posts 1.4.4 Other Rules of Conduct
		Changes	<ul style="list-style-type: none"> Changed notation overall. 1.3 Miiverse Settings for Official Accounts Split up required and recommended settings. Added note about official accounts of Nintendo employees. 1.4 Posts from Official Accounts Added information about U.S. law "Display of Captioning on Equipment Used to View Video Programming." Made each restriction into a sub-heading. 1.5 Note Added screenshot of Player mark.
1.0	2012/12/08	—	<ul style="list-style-type: none"> Initial version.

All company and product names in this document are the trademarks or registered trademarks of their respective companies.

© 2012–2015 Nintendo

The contents of this document cannot be duplicated, copied, reprinted, transferred, distributed, or loaned in whole or in part without the prior approval of Nintendo.