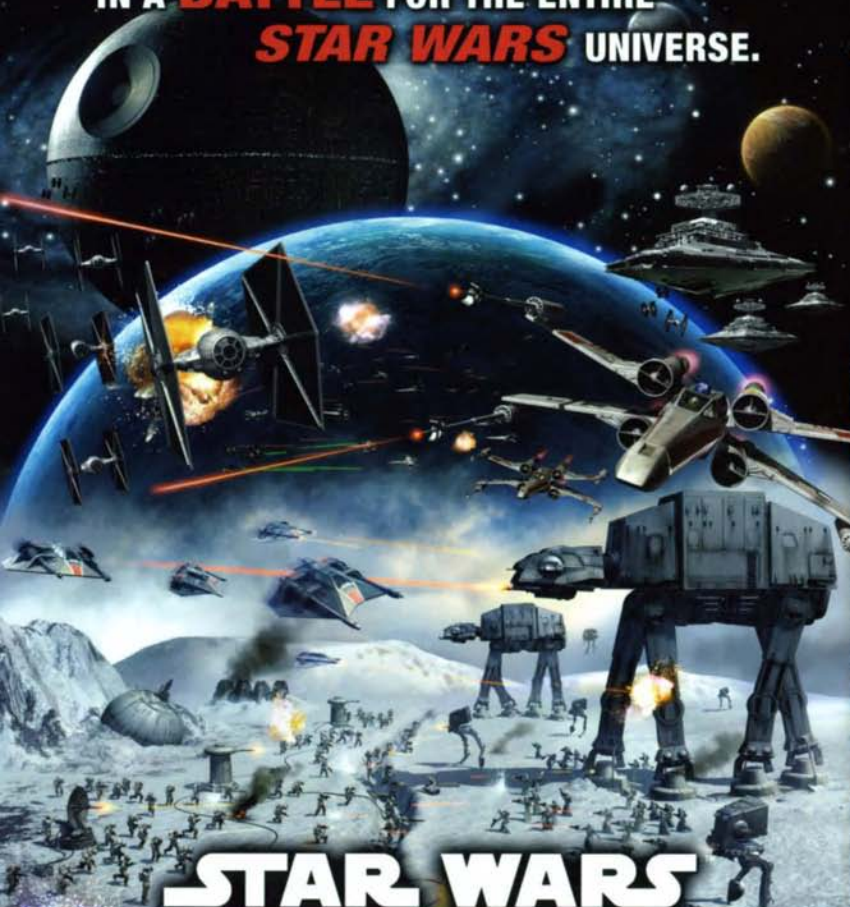


YOU ARE THE ULTIMATE
GALACTIC **COMMANDER**
IN A **BATTLE** FOR THE ENTIRE
STAR WARS UNIVERSE.



STAR WARS EMPIRE AT WAR

2.7.06

www.empireatwar.com

PC
CD-ROM
SOFTWARE

STAR WARS BATTLEFRONT™

SEQUEL
TO THE
BEST-SELLING
STAR WARS™
GAME
OF ALL TIME!



LUCASARTS™

WARNING: PLEASE READ BEFORE INSTALLING OR USING THE SOFTWARE

PHOTOSENSITIVE SEIZURES

A very small percentage of people may possibly experience a seizure when exposed to certain light patterns, flashing lights or other visual images that appear in computer software games. If you, or anyone in your family, have an epileptic condition, consult your physician before installing or using the software. Even people who have no history of seizures or epilepsy may have an undiagnosed condition that can possibly cause a seizure while viewing a computer software game. Reported seizures may have a variety of symptoms, including lightheadedness, altered vision, eye or face twitching, nausea, headaches, jerking or shaking of arms and legs, disorientation, confusion, or any involuntary movement or convulsions.

If you experience any of these symptoms, **IMMEDIATELY STOP PLAYING AND CONSULT A DOCTOR.** Parents or guardians should watch for or ask their children if they are having any of the above symptoms – children and teenagers are reportedly more likely than adults to experience seizures from viewing computer software games.

INTERNET CONNECTION AND SYSTEM REQUIREMENTS FOR ONLINE PLAY NOTICE: You will need to obtain an Internet connection (through a computer meeting the minimum system requirements) in order to play this game online. If you do not use an Internet connection, you cannot play the game online. Such Internet connection may require you to pay a separate fee.

TABLE OF CONTENTS

INSTALLATION	2
CONTROLS	3
INTRODUCTION	6
CREATING A PROFILE	6
WAGING WAR	6
MAIN MENU	7
OPTIONS	7
GAME SCREEN	9
PAUSE SCREEN	10
MAP	11
COMMAND POSTS	12
REINFORCEMENTS	13
UNITS	14
HEROES	18
VEHICLES	19
SINGLE PLAYER	20
RISE OF THE EMPIRE	20
GALACTIC CONQUEST	20
INSTANT ACTION	20
MULTIPLAYER	21
SAVING AND LOADING	23
MEDALS AND AWARDS	24
CREDITS	25
HOW TO CONTACT LUCASARTS	28
SOFTWARE LICENSE AND LIMITED WARRANTY	29

INSTALLATION

To Install **Star Wars Battlefront™ II**, insert the CD into your CD/DVD-ROM drive. If you have Autorun enabled, the game's Launcher will appear. Click the Install button to install the game onto your computer. If your computer does not have Autorun enabled, open My Computer from your Windows desktop and double-click on the CD/DVD-ROM drive showing the **Star Wars Battlefront II** icon. Double-click on the program icon to start installing the program. Once started, a series of onscreen instructions will guide you through the rest of the installation procedure. If you experience problems with the installation, click Help on the game's launcher screen, and then click View Troubleshooting Guide. NOTE: We recommend turning off all background applications and virus scanners before beginning installation.

Some of the information in this manual may have changed prior to the game's release. If any information you are looking for does not appear correct, please refer to the ReadMe file by accessing it through the launcher.

CONTROLS

INFANTRY / JEDI

Left Mouse Button	Primary Attack
Right Mouse Button / R-Alt	Secondary Attack
Space Bar	Jump (tap twice for Jet Pack or Force Jump)
CTRL/C	Crouch
Z / Mouse Button 3	Zoom
Q / Mouse Button 4	View
R / Enter	Reload (not applicable for Jedi)
E / Num 0	Enter/Exit
F1	Squad: Follow Me (not applicable for Jedi)
F2	Squad: Move Out (not applicable for Jedi)
F3	Squad: At Ease (not applicable for Jedi)
F4	Target Lock
F / Mouse Wheel	Cycle Primary Weapon
G	Cycle Secondary Weapon
T	Chat
Y	Team Chat
Mouse X Axis	Look Left/Right
Mouse Y Axis	Look Up/Down
W ↑	Forward
S ↓	Backwards
A ←	Strafe Left
D →	Strafe Right
Shift	Sprint
TAB	Player List
M	Map

CONTROLS

VEHICLE

Left Mouse Button	Primary Attack
Right Mouse Button / R-Alt	Secondary Attack
Z / Mouse Button 3	Zoom
Q / Mouse Button 4	View
E/Num 0	Enter / Exit
F1	Squad: Get Out
F2	Squad: Get In
F4	Target Lock
F / Mouse Wheel	Cycle Seat Position
T	Chat
Y	Team Chat
Mouse X Axis	Turn Left/Right
Mouse Y Axis	Look Up/Down
W ↑	Throttle Forward
S ↓	Throttle Reverse
A ←	Strafe Left
D →	Strafe Right
Shift	Boost
Tab	Player List
M	Map

STARFIGHTER

Left Mouse Button	Primary Attack
Right Mouse Button / R Alt	Secondary Attack
Space Bar	TakeOff/Land
Z / Mouse Button 3	Zoom
Q Mouse Button 4	View
E / Num 0	Enter / Exit
F1	Squad: Get Out
F2	Squad: Get In
F4	Target Lock
F / Mouse Wheel	Cycle Position Seat
T	Chat
Y	Team Chat
Mouse X Axis	Turn Left/Right
Mouse Y Axis	Pitch Up/Down
W ↑	Throttle
S ↓	Brake
Shift	Boost
C / R-Ctrl	Trick
Tab	Players List
M	Map

INTRODUCTION

Get ready for the Rise of the Empire. Wage an epic conquest across the galaxy. Take control of powerful Jedi and legendary heroes while wading into the mayhem. Fight through the cold reaches of space amongst swarms of starfighters. March across war-scarred battlefields from **Star Wars™ Episode III: Revenge of the Sith™**. More intense combat. Bigger battles. More unit classes and vehicles. New weaponry and abilities. Welcome to **Star Wars Battlefront II**.

CREATING A PROFILE

When first starting the game, you must create a profile. The profiles are used to save Single player games and to save option settings.

DIFFICULTY MODES

NORMAL: Auto Target, Aim Assist and Sticky default to ON.

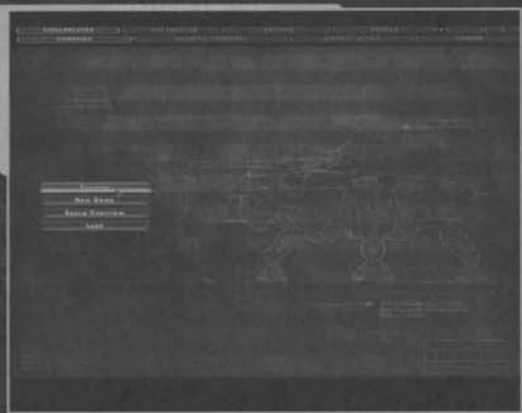
ELITE: Auto Target, Aim Assist and Sticky Reticle to OFF.

The enemy is more aggressive and accurate.

WAGING WAR

Star Wars Battlefront II offers epic action on a galactic scale through multiple game types. There are many ways to conquer the opposition. Before stepping onto the battlefield, each player selects a class with unique abilities. In deep space or on the planet's surface, players work to advance and gain territory, taking out enemies and capturing their Command Posts. Missions also have key objectives that must be completed in order to achieve victory.

MAIN MENU



OPTIONS

GAME OPTIONS

Viewpoint

Allows you to choose between first or third person viewpoint when playing as infantry.

Friendly Fire

Turn this ON or OFF to determine whether units on the same team can damage each other.

Auto Target

When this is set to ON, the player will track an enemy automatically whenever he is hit with a weapon.

Tool Tips

This option allows you to toggle the in game tips to AUTO (tool tips display only once), ON, or OFF.

Reset Tool Tips

Select this to make all tool tips display again.

Always Show Objective Details

This toggles the appearance of Mission Objective text ON or OFF.

Movie Subtitles

Use this option to turn subtitles ON or OFF during movie sequences.

MAIN MENU

VIDEO OPTIONS

In this menu there are many options that you can use to customize your graphics. Click the Auto Detect button to use the settings recommended for your system and video card. You can disable or reduce some of the video options to improve the game's performance.

AUDIO OPTIONS

Here you can adjust the sound effects, music, and speech volumes in the game. You can also select your sound output mode and configure advanced features such as hardware mixing and EAX.

CONTROLS

Here you can completely customize the keys, invert the Y-axis for aiming, and adjust the sensitivity. You can create separate control schemes for Infantry, Vehicle, Starfighter, Jedi, and Turret configurations.

ONLINE OPTIONS

GameSpy Automatic Login

Toggle whether or not the game attempts to log in to GameSpy each time you begin an internet game.

Hosting Bandwidth

Allows you to select the appropriate bandwidth when hosting a game. If you are unsure of your bandwidth, contact your Internet Service Provider.

Search all Regions

Choose whether or not to search all regions for available matches.

Display Network Performance Icon

Toggles the appearance of an icon on screen that shows the relative network performance.

CREDITS

See the names of the many people who worked hard to make this game.

GAME SCREEN



1 Target Information: The name of your currently highlighted target will appear along with a health bar. Friendly targets appear blue, enemies appear red, and mission objectives and native factions will appear yellow.

2 Target Reticle: When the reticle is over a friendly unit it will turn Blue; if it is pointed at an enemy it will turn Red. Tick marks around the interior of the reticle indicate the ammo remaining in your current clip. Some weapons generate heat, which will appear as a circular bar within the reticle. If a weapon overheats you must wait until it cools to fire again. Reload/Recharge time is indicated by five dots at the bottom, or around the edges of the reticle.

3 Objective Indicator: Indicates the next objective in order to complete the mission.

4 Primary Weapon/Ammo: The icon on the left shows the weapon equipped. Scrolling using either the G key or the mouse wheel, you can scroll through your primary and secondary weapons. The numbers represent the total amount of ammo remaining.

5 Secondary Weapon/Ammo: The icon on the left shows the weapon equipped. Scrolling using the Directional Buttons you can scroll through your primary and secondary weapons. The numbers represent the total amount of ammo remaining.

6 Health: Represents how much damage you can take before you become another statistic in the Galactic Database.

7 Power Meter: This bar is depleted by sprinting, rolling, or jumping and recharges over time. Vehicles can use this power for speed boosts and evasive maneuvers. Jedi Force Powers also draw from this bar.

8 Reinforcement Meter: The numbers represent the reinforcements remaining for each faction. The player's faction appears Blue and the enemy is Red. For more information, see Reinforcements, page 13. During Capture the Flag games, this meter is replaced by a score keeper.

9 Mini-Map: See page 11 for information.

Vehicle Position Indicator: In vehicles with multiple positions, your position will be indicated by a yellow triangle. Allies in the vehicle will appear as purple octagons.



PAUSE SCREEN

Press the ESC key to pause the game. Here you can access the following options:

RESUME GAME

Returns you to the battlefield.

OPTIONS

Allows access to most of the options available from the Main Menu.

RESPAWN

Choosing this option will kill your current character, costing your team one reinforcement. You will then be able to respawn at any friendly Command Post.

RESTART MISSION

Starts the mission from the beginning.

QUIT

Return to the Main Menu.

EXIT TO WINDOWS

Exit the game and return to Windows.



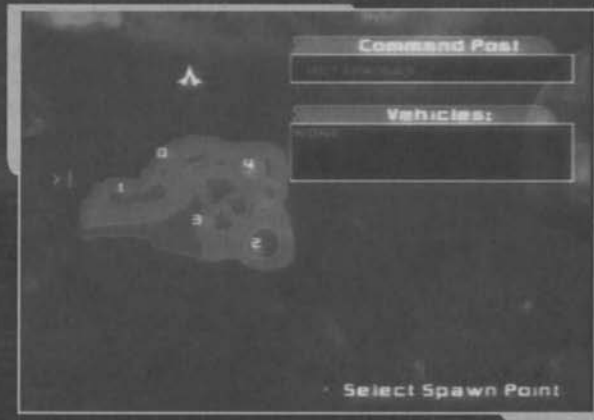
MAP

This displays your location relative to the environment. The white triangle designates your position and facing direction, while blue triangles indicate friendly units and red triangles indicate enemies. Yellow triangles represent native species, which may or may not be hostile depending on your faction. The triangles representing units will flash if they're taking damage. Command Posts appear as ringed dots, colored blue for friendly, red for enemy, and white for neutral. Objects that can be used as cover appear light grey. Turrets appear as white dots with a line indicating facing. Unoccupied vehicles appear as white silhouettes; occupied vehicles are silhouettes of the appropriate color.

The map spins to orient its position relative to the direction that the player is facing when in the default mode. There will always be a white triangle just beyond the edge of the map indicating north. When the map is enlarged (by pressing the M key), it remains static regardless of the player's facing.

Command Posts and Objectives are always displayed even if they are beyond the radius of the map. They will appear at the edge of the map indicating the direction the player will need to travel to get to them.

By pressing the M key, the map will expand to full screen to show the entire battlefield and all Command Posts. This will also display your mission objectives. Pressing the M key again will restore the map to its default position.



COMMAND POSTS

Each battlefield contains tactical positions in key locations across the map known as Command Posts, which are vital because:

- ◀ Reinforcements are deployed at them. Whenever a player dies, any friendly Command Post is available to deploy at. If a team has no command posts under its control, it cannot deploy reinforcements until a Command Post is recaptured.
- ◀ If a team controls the majority of the Command Posts on a map, the opposing team will begin losing reinforcements automatically. If a team controls all of the Command Posts on a map, a victory timer will start counting down.
- ◀ Units can change their class at any friendly Command Post, allowing adaptability to battle conditions. Press the E key when near a friendly Command Post to change classes. There is a small penalty for switching classes: your ammo will not be completely replenished.

COMMAND POST OWNERSHIP

To capture an enemy or neutral Command Post, you must stand within its capture radius. An icon will appear on screen if you are close enough. If there are no enemy units nearby, the capture icon will slowly change color from red to white to blue. When the capture icon is completely blue, the Command Post will now belong to your team.

The rate of capture increases if additional friendly units are nearby. If enemy units approach, the capture icon will alternate between blue and red until one side is driven off. You cannot capture a Command Post while in a vehicle.

Some Command Posts are permanently owned and cannot be captured by the opposing team. Some of these can be destroyed. Only human players can repair these destructible Command Posts. Destructible Command Posts appear on the map as diamonds instead of dots.

Certain vehicles, such as the Imperial AT-AT, are Mobile Command Posts. Mobile Command Posts cannot be captured, but can be destroyed, in which case they will reappear after a set amount of time.

In other game modes like CTF, and Assault, there are Command Posts that allow switching out of character classes but are not capturable. These are indicated by two arrows circling themselves. They will still be colored appropriately so only friendly team members can switch out classes.

REINFORCEMENTS

Reinforcement Points represent the number of reinforcements that each team can field. They are displayed in the reinforcement meter near the mini-map. The blue and red numbers represent friendly and enemy reinforcements respectively.

Units can continue to join the game as long as two conditions are met: there are Reinforcement Points remaining, and at least one Command Post is owned.

When a unit dies, it takes one point off its team's reinforcement total. Any number of units can still deploy as long as one reinforcement point remains. However, if the Reinforcement Points reach zero, the team loses. During some campaign missions, one or both teams will have infinite reinforcements.

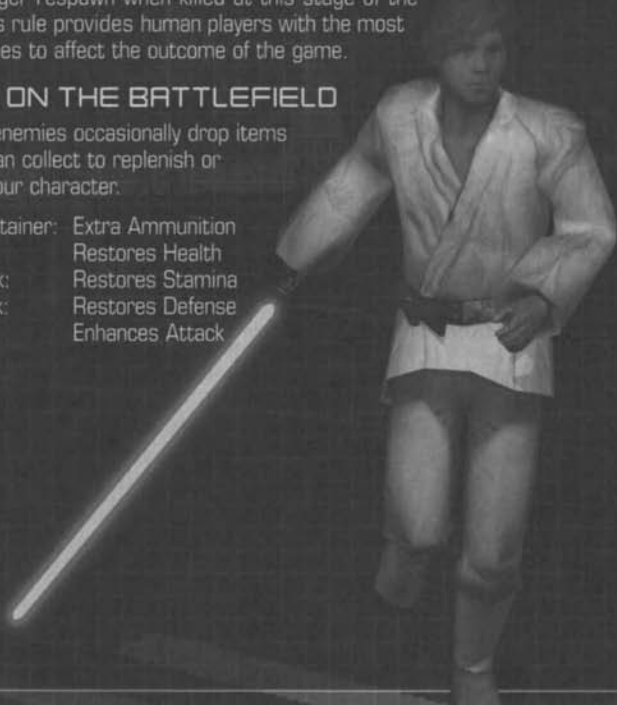
For Singleplayer games, you can deploy immediately after dying. In multiplayer games, a reinforcement timer is set for the map. Each time the timer counts down, reinforcements are deployed for both sides.

When the number of reinforcements matches the number of units on the field, that team will no longer lose reinforcements automatically. This is true even if that team has two or fewer Command Posts controlled. This is done to make sure that victory is earned by defeating all enemy units in combat or by capturing and holding all Command Posts on a map. In addition, AI units will no longer respawn when killed at this stage of the game. This rule provides human players with the most opportunities to affect the outcome of the game.

ITEMS ON THE BATTLEFIELD

Defeated enemies occasionally drop items that you can collect to replenish or enhance your character.

White Container:	Extra Ammunition
Blue Tank:	Restores Health
Yellow Tank:	Restores Stamina
Green Tank:	Restores Defense
Red Tank:	Enhances Attack



REBEL ALLIANCE

REBEL SOLDIER

The Rebel soldier is effective against infantry, especially when they employ squad-based tactics.

Equipment: blaster rifle, blaster pistol, and thermal detonators.

REBEL VANGUARD

Vanguards are called upon to punch holes in an Imperial vehicle brigade. The heavy weapons they carry provide the means to take down menacing enemy air and ground vehicles.

Equipment: rocket launcher, blaster pistol, thermal detonators, and mines.

REBEL MARKSMAN

Rebel marksmen have the specialized task of finding and eliminating targets from a safe location. Their auto-turret dispenser are capable of deadly self-destruction near enemy positions.

Equipment: sniper rifle, blaster pistol, thermal detonators, and auto turret dispenser.

REBEL SMUGGLER

Whenever there is a need to slip past an Imperial fleet undetected, just look for a smuggler. For a fee, the smuggler is willing to take the risk of running contraband right under the Emperor's nose. The smuggler can also repair items as well as slice enemies out of vehicles using his fusion cutter. In addition to this, he can also destroy enemy mines quickly and is invisible to enemy mines.

Equipment: shotgun, fusion cutter, detpack, and health/ammo dispenser.

BOTHAN SPY

The cunning Bothans are known throughout the galaxy for their spying capabilities. On the battlefield they sneak behind enemy lines, causing chaos and wreaking havoc, and then fade into the environment. The Bothan Spy also has the unique ability to regenerate health.

Equipment: incinerator, stealth, regeneration, and timebomb.

WOOKIEE WARRIOR

The Wookiees joined the Rebel Alliance after the Empire invaded their home planet, Kashyyyk, and enslaved their people. Wookiees fight with unmatched ferocity and loyalty support troops with health and ammo.

Equipment: bowcaster, grenade launcher, thermal detonators, and remote droid.

REBEL PILOT (Space Only)

Rebel pilots automatically regenerate the health of whatever vehicle they occupy and are capable of repairing damaged vehicles, droids and turrets. They also carry a powerful timebomb.

Equipment: commando pistol, fusion cutter, and timebomb.

REBEL MARINE (Space Only)

Rebel Marines provide the last line of defense on capital ships, repelling enemy attacks with heavy ordnance.

Equipment: blaster rifle, rocket launcher, and thermal detonator.

GALACTIC EMPIRE

STORMTROOPER

The iron will of the Emperor is personified in the stark white armor of the feared stormtrooper. They are highly disciplined and fanatically loyal to the Emperor, making them an excellent front line assault force.

Equipment: blaster rifle, blaster pistol, thermal detonators.

SHOCK TROOPER

The shock trooper offers powerful support to the blaster-based troops by carrying a small portable missile launcher. This weapon fires explosive charges that are highly effective against vehicles or tight formations of infantry.

Equipment: rocket launcher, blaster pistol, thermal detonators, and mines.

SCOUT TROOPER

Scout troopers use concealment, probe droids and patience to target faraway enemies and eliminate them with their high-powered sniper rifles. Their auto-turret dispenser can self-destruct in a mighty blast, decimating enemy forces.

Equipment: sniper rifle, blaster pistol, thermal detonators, and auto turret dispenser.

IMPERIAL ENGINEER

The Empire's engineers focus on repairing friendly equipment and establishing defenses, while working to demolish the emplacements of the Rebellion.

Equipment: blast cannon, fusion cutter, detpack, and health/ammo dispenser.

IMPERIAL OFFICER

These Imperial tacticians support the troops in the field with a mortar launcher capable of leveling rebel resistance. The officer's unique training allows for increased weapon damage.

Officers also carry extra health and ammo supplies into battle.

Equipment: mortar launcher, rage, Geonosian sonic gun, and remote droid.

DARK TROOPER

Dark troopers use their jetpacks to "jump" to their targets (tap the SPACE bar to jump, then tap again to engage the jump pack). Once in position, their charged arc caster can scorch groups of enemies.

Equipment: arc caster, commando pistol, and thermal detonators.

IMPERIAL PILOT (Space Only)

Imperial pilots automatically regenerate the health of whatever vehicle they occupy and are capable of repairing damaged vehicles, droids and turrets. They also serve as capital ship saboteurs.

Equipment: commando pistol, fusion cutter, and timebomb.

IMPERIAL MARINE (Space Only)

The Empire's Star Destroyers are fortified with these fearless troopers who repel any invading forces.

Equipment: blaster rifle, rocket launcher, and thermal detonator.

REPUBLIC

CLONE TROOPER

Genetically designed for superior fighting capability, clone troopers are best at fighting other infantry units toe-to-toe.

Equipment: blaster rifle, blaster pistol, and thermal detonators.

HEAVY TROOPER

The Advanced Recon Commando specializes in anti-vehicular combat. These units carry a powerful rocket launcher, but its effectiveness against infantry is limited.

Equipment: rocket launcher, blaster pistol, thermal detonators, and mines.

CLONE SHARPSHOOTER

The sharpshooter is a long-range threat to infantry with the sniper rifle, and uses the auto-turret dispenser to engage a destructive self-detonation.

Equipment: sniper rifle, blaster pistol, thermal detonators, and auto turret dispenser.

CLONE ENGINEER

The Republic's engineers support the army by repairing friendly equipment and establishing defenses, and when the need arises, they demolish CIS emplacements with their detpacks.

Equipment: shotgun, fusion cutter, detpack, and health/ammo dispenser.

CLONE COMMANDER

The commanders are specially designed to lead the clone troops into battle. They can temporarily empower nearby ranks with confidence.

Equipment: chaingun, blaster pistol, rally, and remote droid.

JET TROOPER

This highly mobile trooper has a jet pack that allows brief but rapid bursts of flight (tap the SPACE bar to jump, then tap again a short flight). He is a master at ambushes and disruption with his EMP launcher.

CLONE PILOT (Space Only)

These troops have the unique ability to automatically repair any vehicle they occupy. They can also repair vehicles, droids, and turrets on the field with their fusion cutters, as well as set up powerful timed explosives.

CLONE MARINE (Space Only)

The clone marines are similar to standard clone troopers, but carry a rocket launcher for versatility against different targets.

Equipment: blaster rifle, rocket launcher, and thermal detonators.

CIS

SUPER BATTLE DROID

After the debacle at the Battle of Naboo, the Trade Federation ordered a stronger, more independent battle droid, officially designated the B2. Resembling hulking, reinforced battle droids, super battle droids are far superior to their skeletal-looking counterparts.

Equipment: wrist blaster, tri shot, and wrist rocket.

ASSAULT DROID

Under the control of the Separatists, assault droids serve as a cheap yet effective solution to the fast-moving threat of Republic vehicles. Essentially mobile missile launchers, these droids allow the Separatists to handle tough situations.

Equipment: rocket launcher, blaster pistol, thermal detonators, and mines.

ASSASSIN DROID

Assassin droids are specifically programmed and designed with advanced targeting capabilities that allow them to take down targets at extreme range. Their auto-turret dispenser feature powerful self-detonators that can be used against Republic forces.

ENGINEER DROID

These droids support the army by repairing CIS equipment, as well as performing demolitions on Republic emplacements with their detpacks.

Equipment: shotgun, fusion cutter, detpack, and health/ammo dispenser.

MAGNAGUARD

These enhanced droids serve to protect important figures in the CIS army, such as General Grievous. Their deadly neuro poison can cripple any enemies in a radius around them.

Equipment: bulldog RLR, radiation launcher, neuro poison, and remote droid.

DROIDEKA (DESTROYER DROID)

Even feared by Jedi Knights, the crablike droideka is equipped with a personal shield and two powerful repeating blasters instead of arms.

The droideka transforms into a wheel in order to cruise rapidly around the battlefield.

Equipment: repeating blasters and shield emitter.

PILOT DROID (Space Only)

Pilot droids automatically regenerate the health of whatever vehicle they occupy and are capable of repairing damaged vehicles, droids and turrets. They also carry deadly explosives for disabling enemy ships.

Equipment: commando pistol, fusion cutter, and timebomb.

DROID MARINE (Space Only)

The droid marine is an all-purpose fighting machine designed to drive back enemy boarding parties.

Equipment: blaster rifle, rocket launcher, and thermal detonator.

HEROES

Throughout the game, players will have the opportunity to play as the incredibly powerful hero characters. When certain conditions have been met, a prompt will appear on-screen indicating to the player that a hero is now available. The player will have a limited amount of time to take advantage of the hero, as indicated by the glowing Hero Bar. Taking damage will reduce the time remaining on the hero bar, but defeating enemies will increase it. A skillful player will be able to prolong their time with these unique classes. Each hero has an array of unique powers and abilities that can be used to dominate the battlefield. When a hero is defeated, it will leave the battlefield, and may respawn later in the match.



VEHICLES

There are several distinct classes of vehicles that can be piloted, ranging from fast speeder bikes to fearsome AT-AT walkers. Because there are no vehicle repair droids on the map, your engineers become a vital part of the battle.

SCOUT VEHICLES

This type of ground vehicle is fast and light. They can zip across the battlefield at great speed and are not meant for heavy combat. They are armed and armored, but only lightly to give some minimal protection. This type includes the 74-Z speeder bike, Tauntaun, and the STAP.

MEDIUM ASSAULT VEHICLES

These vehicles have heavier weapons and armor, and are slower than the Scout craft, but they pack more power and durability. This type includes the Rebel combat land-speeder, TX-130S fighter tank, AAT, and the Armored Tank Droid.

HEAVY ASSAULT VEHICLES

These vehicles are even more heavily armed and armored, and are used at the front of most assaults. This type includes the Spider Droid and AT-ST.

HEAVY ASSAULT TRANSPORT

These lumbering behemoths can unload devastating amounts of firepower on a target, as well as serving as mobile Command Posts. This type includes the AT-TE, and the AT-AT.

MULTI-PURPOSE STARFIGHTERS

These craft are well-rounded and versatile, making them handy in a dogfight or a strafing run. They have forward firing blasters and a complement of missiles.

Starfighters can use a limited boost to increase their speed (press and hold the Shift key). Also, they can perform evasive maneuvers. To perform a barrel roll, press the C key or Right Ctrl key and then move the Mouse in the direction you want to roll. To perform a loop, double-tap the C key before moving the mouse. This type includes the ARC-170, droid starfighter, X-wing, and TIE fighter.

SCOUT FIGHTERS

Nimble and lightning fast. They are devastating in dogfights, but don't carry the heavy ordnance or armor to survive attacking a Capital Ship. These ships include the Republic Starfighter, Droid Tri-fighter, A-wing, and TIE interceptor.

BOMBERS

These ships are not as fast as the starfighter class, but they carry powerful ordnance and armor for assaulting capital ship emplacements. Many of these vehicles feature more than one position, allowing multiple units to team up and take full advantage of their firepower. This type includes the V-wing, CIS Strike Bomber, Y-wing, and TIE bomber.

ATTACK TRANSPORT FLYERS

This type acts as attack craft and troop transports in battle. Like the Heavy Assault Transports, these ships will act as spawn points for your team when they are on the ground. This type includes the Republic Gunship, CIS gunship, and Imperial Lander.

TRAINING

There are two missions that teach you the general mechanics of gameplay. They include all the types of objectives that you will encounter in the campaign, both on the ground and in space.

RISE OF THE EMPIRE

This mode follows the storyline of the Empire's rise to power.

GALACTIC CONQUEST

In this mode the player uses strategy to take control of planets and dominate the Galaxy. First you choose a map configuration based on the conflicts from both eras of *Star Wars* history. There are four galactic configurations, one for each of the four factions. You will begin each campaign with two base planets and one fleet. To win, you must conquer each of the enemy's bases and defeat their fleets. The game ends if all your bases and fleets are lost.

The game is played in turns, with the player starting first. Each turn is divided into three phases:

ACQUISITION

During the first phase you can spend the credits that you have earned through victory in battle to construct new fleets, recruit new unit classes, or purchase bonuses. Additional fleets can be constructed at an open friendly base planet. When you begin the campaign, only the basic soldier class will be available to your team. New units can be recruited during any turn and will permanently join your forces. You can also purchase up to three bonuses at any time. A Bonus can be used before a battle to enhance your forces, or to

cripple the enemy's.

MOVEMENT/COMBAT

After making purchases you will select a fleet and move it, or choose to end your turn. If you move your fleet into empty space, or onto a friendly base, your turn will end. If you move your fleet into a space occupied by an enemy fleet, or an enemy base, you will engage the enemy in combat. Fleet to fleet combat will occur in space, assaults on an enemy base will occur on the planetary map. Before attacking the enemy, you will have the option to select a battle mode, and then play a bonus card (if any are available). Battle ends when either fleet is destroyed, or the planet is captured.

SUMMARY

At the end of a turn there is a summary screen displaying the status of the entire galaxy, including how many planets you control and how many fleets you've deployed. This is useful for planning your next turn. Once your turn is complete, the enemy will proceed through the same three phases, completing the round.

INSTANT ACTION

This mode allows you to jump right into a battle of your choice. There are multiple instant action game types available in *Star Wars Battlefront II*, and each can be customized in the game options before launching.

CONQUEST

In conquest mode, victory is achieved by capturing all Command Posts on the battlefield, or by defeating all opposing reinforcements. This is the classic *Star Wars Battlefront* mode.

1-FLAG CTF

Players score points by returning the flag to the enemy base. Victory is achieved when a predetermined score is met.

2-FLAG CTF

This is different than 1-Flag mode. You capture the enemy flag and return it to the friendly base to score.

HUNT

In this mode, the hunting team attempts to eliminate the entire hunted team within the time limit. If the hunted team survives until the end of the match, they will be victorious.

ASSAULT

Victory is secured by scoring points; points are scored by destroying enemy units and objects.

SAVING AND LOADING

The game will automatically give you the option to save your game when completing a mission in the Rise of the Empire or upon completing a turn in Campaign mode. In campaign mode you will also have the option to Save and Load from the pause menu during your turn. You will also be prompted to save your game whenever you alter any options, in which case the data will be saved to your profile.

MULTIPLAYER

This mode allows you to compete against other players on a LAN (Local Area Network) or over the Internet.

When selecting the multiplayer option, you will first need to select a network connection. Once you choose your connection, you can then choose from two different ways to connect to a multiplayer game. If you have a firewall active and are having difficulty connecting, please visit www.gamespy.com for information.

NOTE: If you choose to host a multiplayer game yourself, you will have a choice of dedicated or non-dedicated mode. Hosting in dedicated mode means that your PC will be able to provide a more stable multiplayer environment, however you cannot use it to play in the game it is hosting. Hosting in non-dedicated mode allows you to play while hosting, but the game may not perform as well. Performance and stability are also affected by bandwidth and the number of AI characters in a game. It is recommended that you reduce the number of players and AI characters if you are not running in dedicated mode and/or do not have high bandwidth.

INTERNET

Select this option if you wish to connect with other players across the internet. You will have the option to login to the GameSpy matchmaking service

where your statistics will be tracked and posted to a leaderboard. You will be able to narrow your game search based on Max. Players, Max. Ping, Map, Era, Server Type, and Game Name.

LAN

Select this option if you want to connect to a game on your Local Area Network. The game will take a few moments to bring up the list of available multiplayer games. This should take no longer than 30 seconds. Check to make sure there are no connection problems if it takes longer.

SERVER LIST

In the game list there are several categories to describe each game:

FAV: Indicates favorite servers in the Internet lobby.

GAME NAME: Shows the name of the game, as set by the host.

IN/MAX: Shows the number of players currently in the game, and the total possible players.

MAP: Indicates the map currently being played on the server.

PING: Displays the quality of your connection to the server

SERVER NOTE: Dedicated servers will run better than non-dedicated. Lower ping results in faster response times between a player's actions and when they occur in game. If a server is password locked, a padlock icon will appear next to the ping indicator.

When highlighting a particular game, the game options set by the host will be displayed in the Game Info window below the game list.

CREATE

This option allows you to host a game yourself. First enter any name for the game (the default is your profile name), then choose the map(s), and finally set the Game and Host Options.

GAME OPTIONS

AI UNITS PER TEAM: Allows you to set the number of AI-controlled units fighting for each team.

AI DIFFICULTY LEVEL: Select between normal and elite to change the effectiveness of AI units.

CON REINFORCEMENTS: Set the percentage of Conquest Reinforcements available.

CTF SCORE: Set the score target for Capture the Flag games.

HEROES: Toggles the inclusion of heroes for each team. You can choose which conditions will make the hero available, and how often heroes will respawn.

HOST OPTIONS

DEDICATED SERVER: Toggles running dedicated/non-dedicated mode.

MAX PLAYERS: Allows you to set the maximum number of players allowed in the game.

WARM-UP: Select the duration of the warm-up mode before each battle.

VOTING THRESHOLD: This option allows the host to determine the number of votes necessary to boot a player from the game.

TEAM DAMAGE: Toggle the ability for players to cause damage to teammates.

AIM ASSIST: Toggles assisted aiming for all players.

SHOW PLAYER NAMES: Toggles the display of player names over their characters in game.

TEAMS: This can be toggled between Auto Assign, which automatically evenly distributes players between the two teams as they join the game, or Player Select, which allows players to choose their team when they join.

MIN PLAYERS TO START: Sets the minimum number of players that need to join before the game begins. The AI units will not begin fighting until this number has been reached.

PUBLIC GAME: Toggle the game between public and private mode.

GAMESPY

GameSpy is an Internet matchmaking system which allows you to find games on the Internet. When selecting this option you will be asked to login to GameSpy or create a new GameSpy ID profile. It is not necessary to use a profile but doing so allows score tracking. To create a profile you must create a GameSpy nickname (the default is your **Star Wars Battlefront II** profile name), designate a valid e-mail address (which will be used to send you your password if you forget it), and choose a password. You can also set this screen to remember some or all of this information for logging in quickly. Once you log in you will be presented with the same options as in LAN mode.

MEDALS AND AWARDS

Certain accomplishments are tracked in the game. If a player accomplishes certain goals within the course of one life (such as 6 headshots with a sniper rifle), he will earn a medal.

By accumulating Medals players begin to unlock the different levels of an award. Everyone starts out as Green (level 0). After gaining a Medal 4 times in one category the player will advance to Veteran (Level 1) Status. Once the player has attained a Veteran status in any one of the Medal categories then the Award becomes available. If the Award is gained, the Award will stay with that player for one life. In addition, while the Bonus is active the award cannot be accrued again. Heroes will not be eligible for these Bonuses as the Hero himself is enough of an award. The Private, Sergeant, Captain and General rankings reflect the general total of Medals the player has accumulated in his lifetime.

In Single Player games, these Awards will be tracked over the career and anything unlocked will be available in all modes.

In Multiplayer games, the Server Host will have the choice of activating or deactivating Awards in their game session. However, at that point they will be equally available to all players.

Gunslinger	Precision Pistol	6 Kills with Pistol
Frenzy	Elite Assault Rifle	12 Kills with Blaster Rifle
Demolition	Guidable Rockets	4 Critical Hits vs. Vehicles
Technician	Vehicle Regen	Slice into a Vehicle
Marksman	Particle Beam Rifle	6 Headshots with Sniper Rifle
Regulator	Flechette Shotgun	8 Kills with Shotgun
Endurance	Energy Recuperation	8 Points
Guardian	Shielding	16 Points
War Hero	Damage Increase	24 Points
Private	Lead 1 Man	0 Medals total
Sergeant	Lead 2 Men	20 Medals total
Captain	Lead 3 Men	100 Medals total
General	Lead 4 Men	300 Medals total

CREDITS

DEVELOPED BY PANDEMIC STUDIOS, in association with LucasArts

Director
Eric Gitz Gewirtz

Senior Producer
Jim Tso

Producer
Chris Williams

Lead Designer
Peter Delakamp Siefert

Lead Programmer
John Northan

Art Director
Matthew Howland
Palmier

Network Technical Director
Brad Pickering

Programmers
Christopher B. Baker
Jake Carnell
Joelijn Chaw
Steven Duan
Chris Fandrich
David Guore
Julian Mandlov
Nathan Matas
Stewart Miles
Ken Miller
Sarah Noun
Brad Ropertoff
Jason Scanlin
Greg Walker
Mike Zarnott

Additional Programming
Dan Anderson
Adam Batters

Lead Level Designer
Sean Soucy

Designers
Paul Baker
Chris Fusco
Greg Johnson
Michael A. Marzola
Dan Nanni
Joe Shackelford
Brian Warrington

Additional Design
Wallace Huang
Jeffrey Vaughn

Sound Design
Andrew Chaney

Lead Animator
Juan Sanchez

Animator
Elaine Scott

Environment Artists
Chris "Maggie" Arden
Mason K. Bae
Walter Cosico
Rob Keenan
Chris McGee

Additional Design
Wallace Huang
Jeffrey Vaughn

Sound Design
Andrew Chaney

Lead Animator
Juan Sanchez

Animator
Elaine Scott

Environment Artists
Chris "Maggie" Arden
Mason K. Bae
Walter Cosico
Rob Keenan
Chris McGee

Additional Design
Wallace Huang
Jeffrey Vaughn

Sound Design
Andrew Chaney

Lead Animator
Juan Sanchez

Animator
Elaine Scott

Environment Artists
Chris "Maggie" Arden
Mason K. Bae
Walter Cosico
Rob Keenan
Chris McGee

Additional Design
Wallace Huang
Jeffrey Vaughn

Sound Design
Andrew Chaney

Lead Animator
Juan Sanchez

Animator
Elaine Scott

Environment Artists
Chris "Maggie" Arden
Mason K. Bae
Walter Cosico
Rob Keenan
Chris McGee

Artists

Mutsuko Kesi Bunnag
Arne H. Hong
Sungpil Allen Jim
Takashi Morishima
Bryan Norton
Riako Taneda
Graham Traynor
Widjanto Wei Wilharjo

Additional Art
Steven Left
Andrew Mouman

Associate Producers
David Baker
Phil Hong

Production Coordinator
Phuc Van Dinh

CEO
Andrew Goldman

President
Josh Resnick

Director of Production
Greg Borrad

Executive Art Director
Carley Chico

Director of Human Resources
Tina Chut

Director of Operations
Joseph Donaldson

Director of Finance
Carl Lei

Production Support
Mara Cabrera
Tim Diamond
Sean Handon
Steven Left
Tim McMahon
Christine Michiani
Sowers
Kent Scheulke

Production Testers
Frederick Badliss
John Fritts
Christopher Hong
Eddie Rojas
Sam Fried

Interface Design and Animation Supplied By:
1K Studios
Matt Kennedy
Ali Samrafi

Special Thanks
Army and Jennifer Tso
Ingrid Gewirtz & Noah
Gewirtz, Andrew Kazmin,
David Rovin, Elias Slater
Gad, Jane & David Jin,
Jinwook Lee, Vinay
Andrew Bunnag, the
Taneda family, Sofya
Darbinjan, Nicole Palmer,
Sofia Shersunovich,

Producers
Shara Miller
Dan Pettit

Associate Producer
Domine Wong

Production Assistant
James Morris

Technical Director
Jonathan Williams

Programmers
Charlie Smith
Colin Carley

Lead Testers
Toby Mast
K.C. Coleman

Assistant Lead Testers
Matt Rubenstein
Jeffrey Gullet
Xavier "Bad Luck"

Special Thanks
Army and Jennifer Tso
Ingrid Gewirtz & Noah
Gewirtz, Andrew Kazmin,
David Rovin, Elias Slater
Gad, Jane & David Jin,
Jinwook Lee, Vinay
Andrew Bunnag, the
Taneda family, Sofya
Darbinjan, Nicole Palmer,
Sofia Shersunovich,

Producers
Shara Miller
Dan Pettit

Associate Producer
Domine Wong

Production Assistant
James Morris

Technical Director
Jonathan Williams

Programmers
Charlie Smith
Colin Carley

Lead Testers
Toby Mast
K.C. Coleman

Assistant Lead Testers
Matt Rubenstein
Jeffrey Gullet
Xavier "Bad Luck"

Special Thanks
Army and Jennifer Tso
Ingrid Gewirtz & Noah
Gewirtz, Andrew Kazmin,
David Rovin, Elias Slater
Gad, Jane & David Jin,
Jinwook Lee, Vinay
Andrew Bunnag, the
Taneda family, Sofya
Darbinjan, Nicole Palmer,
Sofia Shersunovich,

Producers
Shara Miller
Dan Pettit

Associate Producer
Domine Wong

Production Assistant
James Morris

Technical Director
Jonathan Williams

Programmers
Charlie Smith
Colin Carley

Lead Testers
Toby Mast
K.C. Coleman

Assistant Lead Testers
Matt Rubenstein
Jeffrey Gullet
Xavier "Bad Luck"

Savina Roova, Janka,
Morichi & Lubomir
Manolov, Bulgaria,
Vanessa Johnson, WoW,
Jon Manahan, Sean
O'Connor, James Miller,
Mark Griffin, Cliff Garrett,
Chris Aconeos, John
Adoneos, Julian Lebeck,
Katy BP O'Connor, Rick
Viscanello, Mary, Wesley
and Sydney Picking, Sky
Schultz, Alexander
Cheney, Hayley Cheney,
Kayle Cheney, Jennifer
Shackelford, Dana Coffey,
and Megan Evanch,
Michelle Webb, Jean Roh
5 Saylor, Marjin Hong,
Lien and Jiyen Northan,
Diddy Reese, Molly and
Richard Siefert, the
Keenan Family and
Stephanie Richards,
Hisako Seigmanmartin,
Luc Wolfe, will you
marry me?

Localization Producer
Marianne Monaghan

Lead International Production Assistant
Gary Chiew

International Production Assistants
Cameron Suey
Ken Balough
Erik Hamilton O'Keedy

Audio Lead
David W. Collins

Sound Design
Jim Diaz
Harrison Deutsch
Nick Peck

Cutscene Audio
Ellen Meijers

Original Star Wars Sound Effects
Ben Burt

Music Editing/Implementation
Jesse Harris

Original Star Wars music composed by John Williams
© 5. © Lucasfilm Ltd. & TM. All rights reserved. Used under authorization.

Published by Benjie Music (BM)
Administered and/or co-published with Warner-Tamerlane Music Publishing Corp.

Voice Director
David W. Collins
Wilk Beckman

Assistant Voice Director
Jennifer Sloan

Lead Voice Editor
Harrison Deutsch

Voice Editors
Orin Tiller
G.W. Childs

Writer
Michael Stammle

Video Post Production Artist
Eric Artanovich

QA Testers
Eric Artanovich

International Production Assistants
Erik Hamilton O'Keedy
Gary Chiew
Cameron Suey
Ken Balough

QA Testers
Adam Goodwin
Ahmed Albott

Special Thanks
Army and Jennifer Tso
Ingrid Gewirtz & Noah
Gewirtz, Andrew Kazmin,
David Rovin, Elias Slater
Gad, Jane & David Jin,
Jinwook Lee, Vinay
Andrew Bunnag, the
Taneda family, Sofya
Darbinjan, Nicole Palmer,
Sofia Shersunovich,

Producers
Shara Miller
Dan Pettit

Associate Producer
Domine Wong

Production Assistant
James Morris

Technical Director
Jonathan Williams

Programmers
Charlie Smith
Colin Carley

Lead Testers
Toby Mast
K.C. Coleman

Assistant Lead Testers
Matt Rubenstein
Jeffrey Gullet
Xavier "Bad Luck"

Special Thanks
Army and Jennifer Tso
Ingrid Gewirtz & Noah
Gewirtz, Andrew Kazmin,
David Rovin, Elias Slater
Gad, Jane & David Jin,
Jinwook Lee, Vinay
Andrew Bunnag, the
Taneda family, Sofya
Darbinjan, Nicole Palmer,
Sofia Shersunovich,

Producers
Shara Miller
Dan Pettit

Associate Producer
Domine Wong

Production Assistant
James Morris

Technical Director
Jonathan Williams

Programmers
Charlie Smith
Colin Carley

Lead Testers
Toby Mast
K.C. Coleman

Assistant Lead Testers
Matt Rubenstein
Jeffrey Gullet
Xavier "Bad Luck"

Artists

Mutsuko Kesi Bunnag
Arne H. Hong
Sungpil Allen Jim
Takashi Morishima
Bryan Norton
Riako Taneda
Graham Traynor
Widjanto Wei Wilharjo

Additional Art
Steven Left
Andrew Mouman

Associate Producers
David Baker
Phil Hong

Production Coordinator
Phuc Van Dinh

CEO
Andrew Goldman

President
Josh Resnick

Director of Production
Greg Borrad

Executive Art Director
Carley Chico

Director of Human Resources
Tina Chut

Director of Operations
Joseph Donaldson

Director of Finance
Carl Lei

Production Support
Mara Cabrera
Tim Diamond
Sean Handon
Steven Left
Tim McMahon
Christine Michiani
Sowers
Kent Scheulke

Production Testers
Frederick Badliss
John Fritts
Christopher Hong
Eddie Rojas
Sam Fried

Interface Design and Animation Supplied By:
1K Studios
Matt Kennedy
Ali Samrafi

Special Thanks
Army and Jennifer Tso
Ingrid Gewirtz & Noah
Gewirtz, Andrew Kazmin,
David Rovin, Elias Slater
Gad, Jane & David Jin,
Jinwook Lee, Vinay
Andrew Bunnag, the
Taneda family, Sofya
Darbinjan, Nicole Palmer,
Sofia Shersunovich,

Producers
Shara Miller
Dan Pettit

Associate Producer
Domine Wong

Production Assistant
James Morris

Technical Director
Jonathan Williams

Programmers
Charlie Smith
Colin Carley

Lead Testers
Toby Mast
K.C. Coleman

Assistant Lead Testers
Matt Rubenstein
Jeffrey Gullet
Xavier "Bad Luck"

Special Thanks
Army and Jennifer Tso
Ingrid Gewirtz & Noah
Gewirtz, Andrew Kazmin,
David Rovin, Elias Slater
Gad, Jane & David Jin,
Jinwook Lee, Vinay
Andrew Bunnag, the
Taneda family, Sofya
Darbinjan, Nicole Palmer,
Sofia Shersunovich,

Producers
Shara Miller
Dan Pettit

Associate Producer
Domine Wong

Production Assistant
James Morris

Technical Director
Jonathan Williams

Programmers
Charlie Smith
Colin Carley

Lead Testers
Toby Mast
K.C. Coleman

Assistant Lead Testers
Matt Rubenstein
Jeffrey Gullet
Xavier "Bad Luck"

Special Thanks
Army and Jennifer Tso
Ingrid Gewirtz & Noah
Gewirtz, Andrew Kazmin,
David Rovin, Elias Slater
Gad, Jane & David Jin,
Jinwook Lee, Vinay
Andrew Bunnag, the
Taneda family, Sofya
Darbinjan, Nicole Palmer,
Sofia Shersunovich,

Producers
Shara Miller
Dan Pettit

Associate Producer
Domine Wong

Production Assistant
James Morris

Technical Director
Jonathan Williams

Programmers
Charlie Smith
Colin Carley

Lead Testers
Toby Mast
K.C. Coleman

Assistant Lead Testers
Matt Rubenstein
Jeffrey Gullet
Xavier "Bad Luck"

Akshay Kapil
Alex Bermudez
Anthony Padilla
Branna Woodward
Cameron Christian
Carmen McKay
Carlos Galdames
Chris "Slim" Powell
Clark Parkhurst
Clay Norman
David Fleming
Eliot Crivello
Enrico Brinados
Eric Heisserrin
Eric Stephens
Eric Trenchard-Smith
Grace Morales
Greg Foster
Gregory Guinones
Henry Hall
Jarrod Keith Romes
Jeff Atherton
Jeff Diaz
Jeff James
Jeff Sanders
Joe Acetillo
John Arellano
Jonathan Kwong
Jonathan Lo
Jonny Rice
Joseph Frank
Josh Cole
Josh Rotunda
Julian James
Kelly Robertson
Kip Buryea
Kenneth Brown II
Kenneth Hill
Laura "Kewll" Cabrera
Luis "Ace" Bermudez
Maccabee Shelley
Mark Bailey
Matthew Juckins
Michael Lay
Michael Ward
Miguel Concepcion
Miguel Gonzalez
Orin Kellogg
Orin Tiller
Ryan Adin
Ryan Martin
Seth Benton
Shindaro Ohyama
Sot Kuiper
Tommy Hamey
Troy Sims
Zak Huntwork

Senior Lead Compliance Tester
David Chapman

Assistant Lead Compliance Tester
Sarah Charlin

Compliance Testers
Chris Navarro

Special Thanks
Army and Jennifer Tso
Ingrid Gewirtz & Noah
Gewirtz, Andrew Kazmin,
David Rovin, Elias Slater
Gad, Jane & David Jin,
Jinwook Lee, Vinay
Andrew Bunnag, the
Taneda family, Sofya
Darbinjan, Nicole Palmer,
Sofia Shersunovich,

Producers
Shara Miller
Dan Pettit

Associate Producer
Domine Wong

Production Assistant
James Morris

Technical Director
Jonathan Williams

Programmers
Charlie Smith
Colin Carley

Lead Testers
Toby Mast
K.C. Coleman

Assistant Lead Testers
Matt Rubenstein
Jeffrey Gullet
Xavier "Bad Luck"

Special Thanks
Army and Jennifer Tso
Ingrid Gewirtz & Noah
Gewirtz, Andrew Kazmin,
David Rovin, Elias Slater
Gad, Jane & David Jin,
Jinwook Lee, Vinay
Andrew Bunnag, the
Taneda family, Sofya
Darbinjan, Nicole Palmer,
Sofia Shersunovich,

Producers
Shara Miller
Dan Pettit

Associate Producer
Domine Wong

Production Assistant
James Morris

Technical Director
Jonathan Williams

Programmers
Charlie Smith
Colin Carley

Lead Testers
Toby Mast
K.C. Coleman

Assistant Lead Testers
Matt Rubenstein
Jeffrey Gullet
Xavier "Bad Luck"

Special Thanks
Army and Jennifer Tso
Ingrid Gewirtz & Noah
Gewirtz, Andrew Kazmin,
David Rovin, Elias Slater
Gad, Jane & David Jin,
Jinwook Lee, Vinay
Andrew Bunnag, the
Taneda family, Sofya
Darbinjan, Nicole Palmer,
Sofia Shersunovich,

Producers
Shara Miller
Dan Pettit

Associate Producer
Domine Wong

Production Assistant
James Morris

Technical Director
Jonathan Williams

Programmers
Charlie Smith
Colin Carley

Lead Testers
Toby Mast
K.C. Coleman

Assistant Lead Testers
Matt Rubenstein
Jeffrey Gullet
Xavier "Bad Luck"

Special Thanks
Army and Jennifer Tso
Ingrid Gewirtz & Noah
Gewirtz, Andrew Kazmin,
David Rovin, Elias Slater
Gad, Jane & David Jin,
Jinwook Lee, Vinay
Andrew Bunnag, the
Taneda family, Sofya
Darbinjan, Nicole Palmer,
Sofia Shersunovich,

Producers
Shara Miller
Dan Pettit

Associate Producer
Domine Wong

Production Assistant
James Morris

Technical Director
Jonathan Williams

Programmers
Charlie Smith
Colin Carley

Lead Testers
Toby Mast
K.C. Coleman

Jason Wick
Ian Ruxta
Renée Ya

Mastering Lab Supervisor

Jay Geraci
Mastering Lab

Scott Taylor
Eric Rauch
Jay Tie

Enzyme Lab Leads

Frederic Plante
Eric Charbonneau
Carlo Maher

Mark Springer
Kayven Meagher
Guillaume Jolicoeur

Peter Cooke
Pierre Langlois
Dominic Corbell

Enzyme Lab Testers

Ali Holopainen
Dominic Ludwig
Eric Appelbaum

Frederic Blanchette
Georges Arvanitis
Ian Williamson

Marc Kingsbury
Mathieu Belier
Mathieu Rhéaume

Serge Handfield
Patrick Grenon
David Grenon

Jeremie Ali
François Bissonnette
Joe Reardon

Oliver Collet
Nick Alary
Philip Latour

Philippe Duplantie
Rachael Lesage
Ryan Davis

Sebastien SteOr
Stan Wedeborg
Tammy Loftus

Yan Ouellet
Enzyme Lab
International Testers

Jean-Sebastien
Besuregard
Jean-Sebastien Côté

Patrick Couture
Martin Dodier
Mickael Fleury

Marc Fortin
Gabrielle Garuli
Donann Grillo

François Labrecque
Joanne Ladouceur
Joey Locke

Antonio Marganella
Philippe Masse
Dominic Norman

Maxime Plessis
Joe Reardon
Philippe St-Amant

Enzyme Lab Pre-Certification Manager

Philippe Lévesque

Enzyme Lab Pre-Certification Team

François Berthiaume
Maxime Sabourin
Cybel Fournier

Martin Ferland
Manager of Quality Services

Paul Purdy
QA Supervisor

Chuck McFadden
Senior Lead Tester

Chris Doc Hollander
Quality Services

Computer Technician
John Carley

Quality Services Coordinator
Kellie Walker

Audio and International Department Manager
Bernard O'Farrell

CAST

Bob Bergen
Luke Skywalker

Christina Rumbley
Female Alliance Infantry

Conny Burton
Court Dooku, Imperial Officer 2, Ki Adi Mundi

Dave Boet
Republic Infantry

David W. Collins
Confederate Infantry (Battlefront II), Confederate Officer (Battlefront II), Droid Alarm

Danny Delk
Training Officer

James Arnold Taylor
Obi-Wan

Jamie Glover
General Veers, Imperial Officer 1, Sadiosic Maff

Jonathan Cook
Republic Officer 2, Royal Guard

Joyce Kurtz
Princess Leia

Lex Ling
Han Solo, Imperial Infantry

Mat Lucas
Anakin Skywalker

Matthew Wood
General Grievous

Nick Jameson
Alliance Officer 2, Emperor Palpatine, Snarmy British Palpatine Ally

Rachel Reinstra
Aalya Secura

Scott Lawrence
Darth Vader

Steve Blum
Male Alliance Infantry 1

Steve Stanton
Alliance Officer 1, Ben Kenobi, Darth Maul

T.C. Carson
Mace Windu

Temuera Morrison
Boba Fett, Jango Fett, Republic Officer 1, Retired Clone Trooper

Tim O'Donovan
Male Alliance Infantry 2, Rebellion Commander

Tom Kane
Imperial Officer 3, Yoda

President
Jim Ward

Vice President of Finance
Kevin Weston

Vice President of Global Marketing and Sales
John Geoghegan

Senior Director of Production Services
Atsuko Matsumoto

Director of Marketing
Kevin Kurtz

Director of Global Sales
Kevin Kebodeaux

Director of Studio Operations
Matt White

Product Marketing Manager
Sam Saliba

Assistant Brand Manager
Matt Shell

Director of Public Relations
Anne Marie Stein

Public Relations Manager
Jason Andersen

Studio Publicist
Chris Baker

Media and Events Publicists
Alexis Menin

Hadley Fitzgerald
Sales and Channel Marketing

Tem Dome
Tim Moore

Mike Maguire
Greg Robles

Kristina Landies
Operations

Evelyn Boring
Scott Fry

Internet Manager
Jim Passalacqua

Director of Consumer Insights
Sean Denny

Consumer Insights Specialist
Melissa Biegen

Playability/Usability Specialist
Heather Desurvire, Behavistics, Inc.

Lucas Licensing
Chris Gohar

Kristi Kaufman
Leland Chee
Stacy Chengotis

Studio Coordinators
Peggy Ary
Mette Adams

IT Support
Jimi Carpenter
Danyil Jacobson

Dinesh Katsaniya
Joe Shum
Died Williams

John von Echnorn
Greg Miller
Victor Tenored-Ballgren

John Doak
Mike Ehrhidge
Melanie Jacobson

Manual Editor
Ken Balough

Manual Writer
Matt Keast

Creative Services
Manager/Manual Designer
Patty Hill

Business Affairs
Seth Starberg
Mark Barabak

Jannett Shirley-Paul
Anne Marie Hawkins
John Garrett

Special Thanks
Aiden Johnas Deksys
Al Goldsmith

Alex Savers
Amanda Yase
Carly Richardson

Carson Hildreth for loving a gamer
Catherine Durand
Charlie Murphy

Chris Adonios
Chris Hockabout
Christian, Meghan & Luke

Druck & Val
Collins, Ayres, Donahoe,
and Tekautz families

Cunne Dyr
Cyn Martinez
Elvis & Gail

Eric Johnston
Erin Haier
Eva Klein

Ferdinand Pensche
GhostGirl

Jack and Gaylin O'Keedy
Jack Hirschmann
James Miller

Jonathan Manahan
Julian Leteck
Justin Lambros

Katy Dismore
Mackenzie Merril-Wick
Mik K. Tseng

Matthew Bume
Matthew Widener
Melissa Cordova, my Love

Mysty with the Goldie
Looking Chain for all the Safety
Peleigh Mann

Robert Monaghan
Robin Pettit
Sara Harrison

Sean O'Donnell
Stacey Schneider
Tabitha Tosti

The Coleman Family and all my friends
The GLC from Newport, Wales
The Millers and the Cavenaughs

The Montrose Meteors
The Rice Family
The Ward Family

Trish Visita
Trish, Liz, Vlad, and Sarah
Uri McFadden-Goodwin

Veronica, Laura, Marc, Wendy, Kevin and the rest of the Jardin extended family
Vina
Will Melick

Wang & Lau Family
In Memory of
Aunt Debbie

Bryan Slet
Carol Shoup-Sanders
John R. Shoup

Charles & Audrey Benton
Deborah Pacheco
Florence Benjamin

Gerald Glenn Fenimore
Johnny Jardin
Katherine Killenger

Lloyd and Margaret Suty
Nereida Quinones
Robert Pratt

Ruth Davanport
Sara Schneider
Tahya & Elmer Gullett

Very Special Thanks
George Lucas

This product contains software technology licensed from GameSpy Industries, Inc. © 1999-2005 IGN Entertainment, Inc. GameSpy and the "Powered by GameSpy" design are trademarks of GameSpy Industries, Inc. All rights reserved.

POWERED BY
gameSpy

Uses Bink Video. Copyright © 1997-2004 by RAD Game Tools, Inc.

zlib -- interface of the 'zlib' general purpose compression library version 1.2.1, November 17th, 2003 Copyright ©1995-2003 Jean-loup Gailly and Mark Adler

expat - XML Parser Toolkit Copyright © 1998, 1999, 2000 The Open Source Software Center Ltd.

Permission is hereby granted, free of charge, to any person obtaining a copy of expat - XML Parser Toolkit, and associated documentation files (exclusive of any documentation files or copies of expat - XML Parser Toolkit that may be associated with or part of Star Wars Battlefront II) to deal in the expat - XML Parser Toolkit without restriction, including without limitation the rights to use, copy, modify, merge, publish, distribute, sublicense, and/or sell copies of the expat - XML Parser Toolkit and to permit persons to whom the expat - XML Parser Toolkit is furnished to do so, subject to the following conditions: The above copyright notice and this permission notice located at the website www.cimark.com/xml/copying.txt shall be included in all copies or substantial portions of the expat - XML Parser Toolkit.

libpng versions 1.0.7, July 1, 2000, through 1.2.5, October 3, 2002, © 2000-2002 Glenn Randers-Pehrson

Lua programming language Copyright © 1994-2004 Tecgraf, PUC-Rio.

Permission is hereby granted, free of charge, to any person obtaining a copy of Lua programming language and associated documentation files (exclusive of any documentation files or copies of Lua programming language that may be associated with or part of Star Wars Battlefront II), to deal in the Lua programming language without restriction, including without limitation the rights to use, copy, modify, merge, publish, distribute, sublicense, and/or sell copies of the Lua programming language, and to permit persons to whom the Lua programming language is furnished to do so, subject to the following conditions: The above copyright notice and this permission notice shall be included in all copies or substantial portions of the Lua programming language.

TECHNICAL SUPPORT

CUSTOMER SUPPORT - HERE TO HELP YOU!

Problem? Question? If you are having problems with your game, we are here to help.

AUSTRALIA

Electronic Arts Australia Support Hotline: 1902 261 600*

*Sirius calls charged at \$2.48 per minute, GST inc.

Calls from Mobile & Public phones higher (If you are under 18 years of age parental consent is required).

Operating hours from 9am to 8pm 7 days a week, as well as pre-recorded information 24 hours a day.

Customer Service Address:

Electronic Arts
PO Box 432
Southport QLD
4215, Australia

NEW ZEALAND

Electronic Arts New Zealand, Games Hotline: 0900 58885*

(If you are under 18 years of age parental consent required).

*Calls charged at \$1.99 per minute inc GST 7 days a week 9am - 8pm.

Calls from Mobile & Public phones are higher.

Customer Service Address:

Electronic Arts New Zealand
PO Box 47596
Ponsonby
New Zealand

SOUTH AFRICA

Game Smith: (011) 740-0615/6

Electronic Arts South Africa
PO Box 3180
Rivonia
2128

HONGKONG

Suite 2111 - 3, IFC II, 8 Finance Street, Central, HK.

TEL:+852 3166 6006

FAX:+852 2110 9801

E-mail:hksupport@ea.com

Service Time: Am 9:30 - Pm 6:00 (Monday-Friday, Excluding Public Holiday)

SINGAPORE

No. 1 Fifth Avenue, Guthrie House, #04-07, Singapore 268802

TEL:+65 6 415 3088

FAX:+65 6 875 1771

E-mail:support@ea.com.sg

Service Time: Am 9:30 - Pm 6:00 (Monday-Friday)

KEEP UP WITH THE LATEST EA NEWS..!

If you want to keep up with all the latest news, downloads and coolest updates from EA then all you have to do is register as an EA Direct Member. It's easy!

Register now on

www.eagames.com.au

or

www.easports.com.au

As an EA Direct Member you will be kept in the 'know' as to what is new and hot from EA Australia, delivered directly to your inbox.

LIMITED WARRANTY

Electronic Arts warrants to the original purchaser of this computer software product that the recording media on which the software programs are recorded will be free from defects in materials and workmanship for 12 months from the date of purchase. During such period defective media will be replaced if the original product is returned to Electronic Arts at the address at the rear of this document, together with a dated proof of purchase, a statement describing the defects, the faulty media and your return address.

This warranty is in addition to, and does not affect your statutory rights in any way.

This warranty does not apply to the software program themselves, which are provided "as is", nor does it apply to media which has been subject to misuse, damage or excessive wear.

LucasArts and the LucasArts logo are trademarks of Lucasfilm Ltd. *Star Wars* Battlefront is a trademark of Lucasfilm Entertainment Company Ltd. © 2005 Lucasfilm Entertainment Company Ltd. or Lucasfilm Ltd. & TM as indicated. All rights reserved.

This game and manual are each a work of fiction. All of the characters, events, locations, logos, and entities portrayed or depicted are fictional. Any resemblance to real persons, living or dead, or actual events is purely coincidental.

