

The Main Play Screen

Compass

Main Window

Other Game Options



Time

Play
Options

Info

NPC
Player

Team Leader

Party Members

Life Points (Green)
Astral Points (Red)

Character Review

Double-click on a character portrait or press F8

Portrait. Arrows to the side allow you to scroll to another member.

Body. Click here to pull down the body "blind".

Name & Class

Viraya She-Warrior

Hunger Thirst

EP: 76600
Level: 6

Money: 230 45 0B

Height: 184 cm
Weight: 3360 oz

Deity		Tsa	
CR	13/13	SN	4/4
WD	8/8	AC	3/3
CH	11/13	CL	6/6
DX	3/3	AV	3/3
AG	11/11	NE	7/7
IN	12/12	CU	3/3
ST	16/16	VT	4/4
LP	52/52		
AP	0/0		

MR 1
AC 4

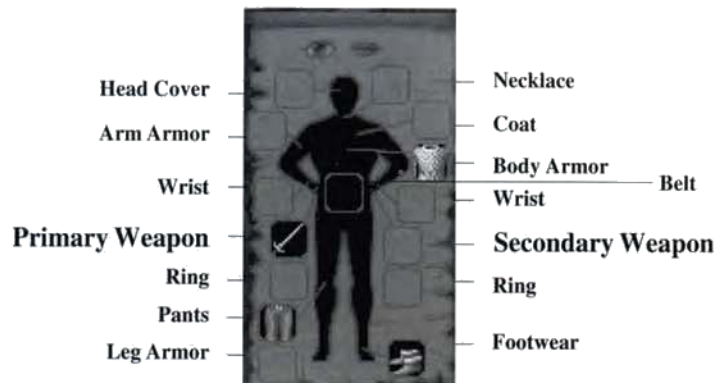
Endurance 68
Load 710 oz
MF 8

Items in Backpack

General Information

Secondary Statistics

Character Statistics.
(Attack & Parry Values also appear here)



To *equip* an item, drag it to the appropriate slot.

To *use* an item, click on the item, then right-click to bring up the Character Review options. Select Use Item from the menu.

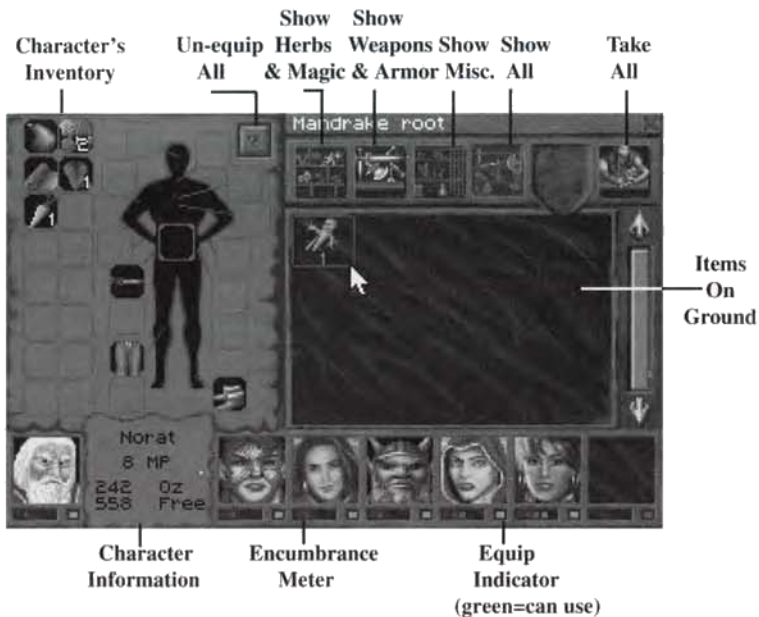
To *eat* an item, drag it to the mouth icon.

To *examine* an item, drag it to the eye icon.

For other options, right-click while on the Character Review screen. The Character Review options menu will appear.

Item Distributor

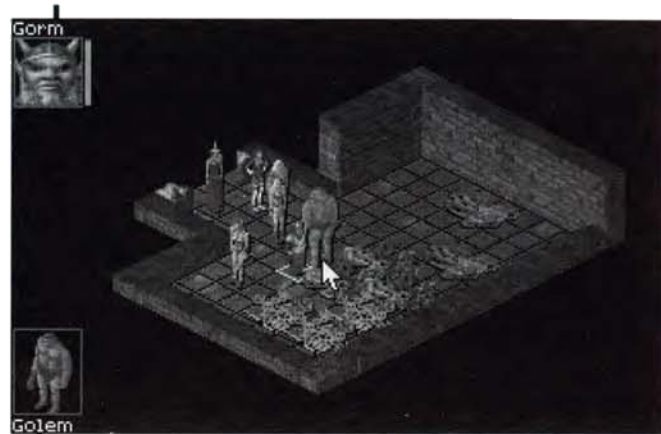
Press F10



To view only a particular type of item, click on one of the four top buttons. For example, clicking on the button that shows a shelf with a sword on it will display only weapons and armor.

Combat

Active Character

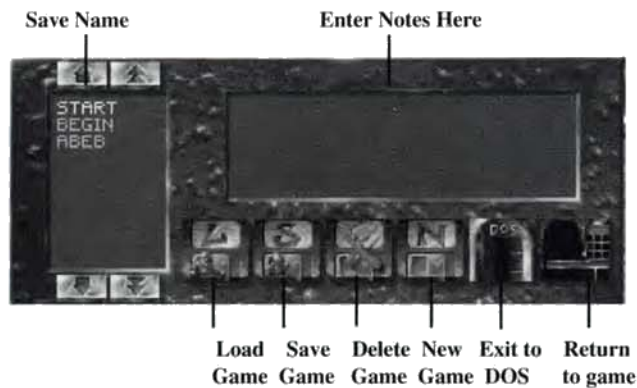


Targeted Opponent

Characters have a maximum of one attack and one parry per round. They may cast spells and shoot arrows diagonally, but may move and attack to the north, south, east or west. See the Combat section of the manual for more details.

Saving and Loading Games

Click on the Disk Options icon to save or load games.



The On-line Manual

Press F1 to bring up the on-line manual



The Game Options Screen

Press F3 to bring up the Game Options Screen



At the top of the Game Options screen are three tabs. When you have set the game options the way you want them, click on the Save tab to save your current game settings. Click on the Load tab to load settings you had previously saved. Click on the Reset tab to set all the game settings back to their default values.

There are three groups of game options: Video Options, Printer Options, Game Options, and 3D Options. To find out more about any option, left-click on the option name. A brief description of the option will appear.

In the **Video Options** section, you can set the resolution used for animations and illustrations. You can also test your SVGA display. Note that you need a VESA compliant video card or driver to display animations and illustrations in SVGA.

The **Printer Options** section lets you adjust setting for when you print character sheets or diary entries. If you are having trouble printing, try setting the game to print to "File". The game will create ASCII files instead of sending information to the printer. You can then load the ASCII files into a word processing program to print them.

You may adjust music, sound effects, and the balance between the two in the **Sound Options** section.

The **Game Options** section allows you to set your play mode to Advanced or Novice, as well as adjust the screen saver delay, combat speed, menu boxes, and text speed.

In the **3D Options** section, you may adjust the game's 3D detail levels. If you have a slower machine, you may find that you get better performance with a lower detail level. You may also switch between the normal display and the full screen 3D display. (Note that you can also switch between the normal display and the full screen 3D view by pressing Control-V.)

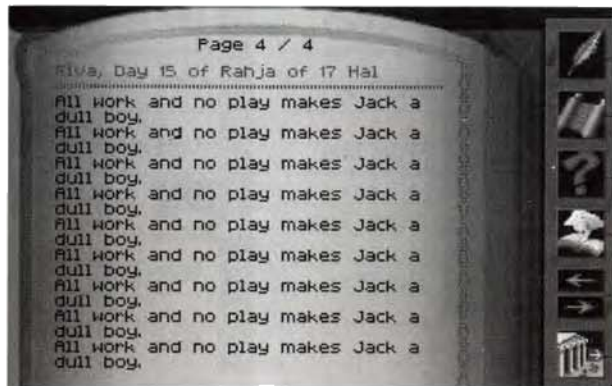
The Automap

Click on the Automap icon or press F6



The Diary

Press F5 to access the diary



Write Entry

Print

Search

Previous
Page

Next Page

Leave Diary

Icons

	Exit
	Talk
	Character Options
	Disk Options
	Donate
	Ask for Miracle
	Use Magic
	Use Talent
	Eat and Drink
	Get Room
	Sleep
	Tell Fortune

	Add Character
	Remove Character
	Delete Character
	New Character
	Split Party
	Join Parties
	Next Party
	Automap
	Write Text
	Delete Text
	Hide Text

	Buy
	Sell
	Haggle
	Next/Prev Page
	Repair
	Treat Wounds
	Cure Disease
	Cure Poison
	Depetrify
	Next/Prev Entry
	Write Entry
	Print

Keyboard Shortcuts

Arrow Keys	Move
Shift+Arrow Key	Run
Alt+Arrow Key	Move Sideways
Home	Look Up
End	Look Down
PgUp	Open Menu
PgDn	Close Menu

Ctrl-Q	Quit
Ctrl-P	Pause
Ctrl-V	Toggle Full Screen Mode

F1	On-line Manual
F2	Reposition Characters
F3	Game Options
F4	Date and Time
F5	Diary
F6	Automap
F7	Disk Options
F8	Character Review
F9	Score
F10	Item Distributor